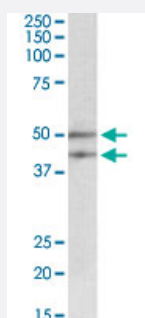


MEIS2 polyclonal antibody

Catalog # PAB18568 Size 100 ug

Applications



Western Blot (Tissue lysate)

MEIS2 polyclonal antibody (Cat # PAB18568) (0.3 ug/mL) staining of rat thymus lysate (35 ug protein in RIPA buffer). Primary incubation was 1 hour. Detected by chemiluminescence.

Specification

Product Description	Goat polyclonal antibody raised against synthetic peptide of MEIS2.
Immunogen	A synthetic peptide corresponding to amino acids at internal region of human MEIS2.
Sequence	C-QSNRAGFLLDPSVSQ
Host	Goat
Theoretical MW (kDa)	50, 45
Reactivity	Human, Rat
Specificity	This antibody is expected to recognize isoforms a (NP_733777.1), c (NP_733775.1), and g (NP_758526.1).
Form	Liquid
Purification	Antigen affinity purification
Concentration	0.5 mg/mL

Recommend Usage	ELISA (1:16000) Western Blot (0.3-1 ug/mL) The optimal working dilution should be determined by the end user.
Storage Buffer	In 0.5 mg/mL Tris saline, pH 7.3 (0.02% sodium azide, 0.5% BSA)
Storage Instruction	Store at -20°C. Aliquot to avoid repeated freezing and thawing.
Note	This product contains sodium azide: a POISONOUS AND HAZARDOUS SUBSTANCE which should be handled by trained staff only.

Applications

- Western Blot (Tissue lysate)

MEIS2 polyclonal antibody (Cat # PAB18568) (0.3 ug/mL) staining of rat thymus lysate (35 ug protein in RIPA buffer). Primary incubation was 1 hour. Detected by chemiluminescence.

- Enzyme-linked Immunoabsorbent Assay

Gene Info — MEIS2

Entrez GeneID	4212
Protein Accession#	NP_733777.1 ; NP_733775.1 ; NP_758526.1
Gene Name	MEIS2
Gene Alias	HsT18361, MGC2820, MRG1
Gene Description	Meis homeobox 2
Omim ID	601740
Gene Ontology	Hyperlink
Gene Summary	This gene encodes a homeobox protein belonging to the TALE ('three amino acid loop extension') family of homeodomain-containing proteins. TALE homeobox proteins are highly conserved transcription regulators, and several members have been shown to be essential contributors to developmental programs. Multiple transcript variants encoding distinct isoforms have been described for this gene. [provided by RefSeq]
Other Designations	Meis homolog 2 Meis1, myeloid ecotropic viral integration site 1 homolog 2 Meis1-related gene 1 OTTHUMP00000160209 TALE homeobox protein Meis2

Disease

- [Cardiovascular Diseases](#)
- [Kidney Failure](#)
- [Tobacco Use Disorder](#)
- [Ventricular Dysfunction](#)