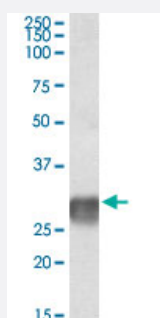


LAIR1 polyclonal antibody

Catalog # PAB18564 Size 100 ug

Applications



Western Blot (Tissue lysate)

LAIR1 polyclonal antibody (Cat # PAB18564) (2 ug/mL) staining of human lymph node lysate (35 ug protein in RIPA buffer). Primary incubation was 1 hour. Detected by chemiluminescence.

Specification

Product Description	Goat polyclonal antibody raised against synthetic peptide of LAIR1.
Immunogen	A synthetic peptide corresponding to amino acids at internal region of human LAIR1.
Sequence	C-NDTEDVSQASPSE
Host	Goat
Theoretical MW (kDa)	28
Reactivity	Human
Specificity	This antibody is expected to recognize both isoforms (NP_002278.1; NP_068352.1).
Form	Liquid
Purification	Antigen affinity purification
Concentration	0.5 mg/mL
Recommend Usage	ELISA (1:1000) Western Blot (1-3 ug/mL) The optimal working dilution should be determined by the end user.

Storage Buffer	In 0.5 mg/mL Tris saline, pH 7.3 (0.02% sodium azide, 0.5% BSA)
Storage Instruction	Store at -20°C. Aliquot to avoid repeated freezing and thawing.
Note	This product contains sodium azide: a POISONOUS AND HAZARDOUS SUBSTANCE which should be handled by trained staff only.

Applications

- Western Blot (Tissue lysate)

LAIR1 polyclonal antibody (Cat # PAB18564) (2 ug/mL) staining of human lymph node lysate (35 ug protein in RIPA buffer). Primary incubation was 1 hour. Detected by chemiluminescence.

- Enzyme-linked Immunoabsorbent Assay

Gene Info — LAIR1

Entrez GeneID	3903
Protein Accession#	NP_002278.1;NP_068352.1
Gene Name	LAIR1
Gene Alias	CD305, LAIR-1
Gene Description	leukocyte-associated immunoglobulin-like receptor 1
Omim ID	602992
Gene Ontology	Hyperlink
Gene Summary	The protein encoded by this gene is an inhibitory receptor found on peripheral mononuclear cells, including NK cells, T cells, and B cells. Inhibitory receptors regulate the immune response to prevent lysis of cells recognized as self. The gene is a member of both the immunoglobulin superfamily and the leukocyte-associated inhibitory receptor family. The gene maps to a region of 19q13.4 called the leukocyte receptor cluster, which contains at least 29 genes encoding leukocyte-expressed receptors of the immunoglobulin superfamily. [provided by RefSeq]
Other Designations	leukocyte-associated Ig-like receptor 1