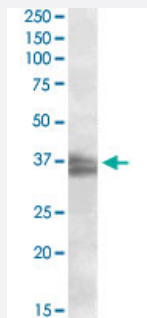


# FRG1 polyclonal antibody

Catalog # PAB18554      Size 100 ug

## Applications



### Western Blot (Cell lysate)

FRG1 polyclonal antibody (Cat # PAB18554) (2 ug/mL) staining of Jurkat nuclear lysate (35 ug protein in RIPA buffer). Primary incubation was 1 hour. Detected by chemiluminescence.

## Specification

<b>Product Description</b>	Goat polyclonal antibody raised against synthetic peptide of FRG1.
<b>Immunogen</b>	A synthetic peptide corresponding to amino acids at internal region of human FRG1.
<b>Sequence</b>	C-TVTNFGGEISGT
<b>Host</b>	Goat
<b>Theoretical MW (kDa)</b>	35, 29.2
<b>Reactivity</b>	Human
<b>Form</b>	Liquid
<b>Purification</b>	Antigen affinity purification
<b>Concentration</b>	0.5 mg/mL
<b>Recommend Usage</b>	ELISA (1:2000) Western blot (2 ug/mL) The optimal working dilution should be determined by the end user.
<b>Storage Buffer</b>	In 0.5 mg/mL Tris saline, pH 7.3 (0.02% sodium azide, 0.5% BSA)

**Storage Instruction**

Store at -20°C.  
Aliquot to avoid repeated freezing and thawing.

**Note**

This product contains sodium azide: a POISONOUS AND HAZARDOUS SUBSTANCE which should be handled by trained staff only.

## Applications

- Western Blot (Cell lysate)

FRG1 polyclonal antibody (Cat # PAB18554) (2 ug/mL) staining of Jurkat nuclear lysate (35 ug protein in RIPA buffer). Primary incubation was 1 hour. Detected by chemiluminescence.

- Enzyme-linked Immunoabsorbent Assay

## Gene Info — FRG1

**Entrez GeneID**[2483](#)**Protein Accession#**[NP\\_004468.1](#)**Gene Name**

FRG1

**Gene Alias**

FRG1A, FSG1

**Gene Description**

FSHD region gene 1

**Omim ID**[601278](#)**Gene Ontology**[Hyperlink](#)**Gene Summary**

This gene maps to a location 100 kb centromeric of the repeat units on chromosome 4q35 which are deleted in facioscapulohumeral muscular dystrophy (FSHD). It is evolutionarily conserved and has related sequences on multiple human chromosomes but DNA sequence analysis did not reveal any homology to known genes. In vivo studies demonstrate the encoded protein is localized to the nucleolus. [provided by RefSeq]

**Other Designations**

facioscapulohumeral muscular dystrophy region gene-1