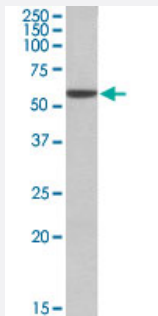


ALDH3A1 polyclonal antibody

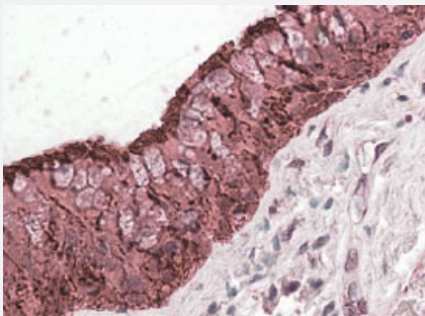
Catalog # PAB18542 Size 100 ug

Applications



Western Blot (Tissue lysate)

ALDH3A1 polyclonal antibody (Cat # PAB18542) (0.01 ug/mL) staining of mouse eye lysate (35 ug protein in RIPA buffer). Primary incubation was 1 hour. Detected by chemiluminescence.



Immunohistochemistry (Formalin/PFA-fixed paraffin-embedded sections)

Immunohistochemical staining of human lung with ALDH3A1 polyclonal antibody (Cat # PAB18542) (3.8 ug/mL). Steamed antigen retrieval with citrate buffer pH 6, AP-staining.

Specification

Product Description	Goat polyclonal antibody raised against synthetic peptide of ALDH3A1.
Immunogen	A synthetic peptide corresponding to amino acids at C-terminus of human ALDH3A1.
Sequence	C-RYPPSPAKMTQH
Host	Goat
Theoretical MW (kDa)	55
Reactivity	Human, Mouse
Specificity	Reported variants represent identical protein: NP_001128639.1, NP_000682.3, NP_001128640.1

Form	Liquid
Purification	Antigen affinity purification
Concentration	0.5 mg/mL
Recommend Usage	Immunohistochemistry (Formalin/PFA-fixed paraffin-embedded sections)(3-5 ug/mL) ELISA (1:32000) Western Blot (0.01-0.03 ug/mL) The optimal working dilution should be determined by the end user.
Storage Buffer	In 0.5 mg/mL Tris saline, pH 7.3 (0.02% sodium azide, 0.5% BSA)
Storage Instruction	Store at -20°C. Aliquot to avoid repeated freezing and thawing.
Note	This product contains sodium azide: a POISONOUS AND HAZARDOUS SUBSTANCE which should be handled by trained staff only.

Applications

- Western Blot (Tissue lysate)

ALDH3A1 polyclonal antibody (Cat # PAB18542) (0.01 ug/mL) staining of mouse eye lysate (35 ug protein in RIPA buffer). Primary incubation was 1 hour. Detected by chemiluminescence.

- Immunohistochemistry (Formalin/PFA-fixed paraffin-embedded sections)

Immunohistochemical staining of human lung with ALDH3A1 polyclonal antibody (Cat # PAB18542) (3.8 ug/mL). Steamed antigen retrieval with citrate buffer pH 6, AP-staining.

- Enzyme-linked Immunoabsorbent Assay

Gene Info — ALDH3A1

Entrez GeneID	218
Protein Accession#	NP_000682.3
Gene Name	ALDH3A1
Gene Alias	ALDH3, ALDHIII, MGC10406
Gene Description	aldehyde dehydrogenase 3 family, memberA1
Omim ID	100660

Gene Ontology

[Hyperlink](#)

Gene Summary

Aldehyde dehydrogenases oxidize various aldehydes to the corresponding acids. They are involved in the detoxification of alcohol-derived acetaldehyde and in the metabolism of corticosteroids, biogenic amines, neurotransmitters, and lipid peroxidation. The enzyme encoded by this gene forms a cytoplasmic homodimer that preferentially oxidizes aromatic and medium-chain (6 carbons or more) saturated and unsaturated aldehyde substrates. It is thought to promote resistance to UV and 4-hydroxy-2-nonenal-induced oxidative damage in the cornea. The gene is located within the Smith-Magenis syndrome region on chromosome 17. Multiple alternatively spliced variants, encoding the same protein, have been identified. [provided by RefSeq]

Other Designations

aldehyde dehydrogenase 3A1|aldehyde dehydrogenase isozyme 3|aldehyde dehydrogenase type III|aldehyde dehydrogenase, dimeric NADP-preferring|stomach aldehyde dehydrogenase

Pathway

- [Drug metabolism - cytochrome P450](#)
- [Glycolysis / Gluconeogenesis](#)
- [Histidine metabolism](#)
- [Metabolic pathways](#)
- [Metabolism of xenobiotics by cytochrome P450](#)
- [Phenylalanine metabolism](#)
- [Tyrosine metabolism](#)

Disease

- [Attention Deficit Disorder with Hyperactivity](#)
- [Autistic Disorder](#)
- [Brain Neoplasms](#)
- [Breast cancer](#)
- [Breast Neoplasms](#)
- [Carcinoma](#)
- [Drug Toxicity](#)
- [Genetic Predisposition to Disease](#)

- [Kidney Failure](#)
- [NARP](#)
- [Neoplasms](#)
- [Ovarian cancer](#)
- [Ovarian Neoplasms](#)
- [Schizophrenia](#)
- [Tobacco Use Disorder](#)