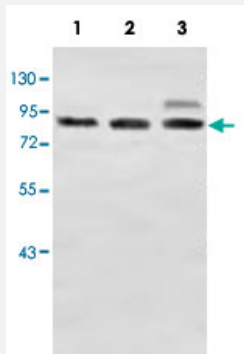


ZC3H11A polyclonal antibody

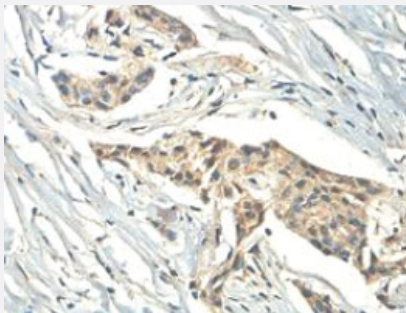
Catalog # PAB18537 Size 100 ug

Applications



Western Blot (Tissue lysate)

Western blot analysis of human fetal brain (Lane 1) and fetal lung (Lane 2) and fetal kidney (Lane 3) lysates with ZC3H11A polyclonal antibody (Cat # PAB18537) at 1 : 500 dilution.



Immunohistochemistry (Formalin/PFA-fixed paraffin-embedded sections)

Immunohistochemical analysis of paraffin-embedded human breast carcinoma showing cytoplasmic staining with ZC3H11A polyclonal antibody (Cat # PAB18537) at a 1 : 100 dilution.

Specification

Product Description	Rabbit polyclonal antibody raised against partial recombinant ZC3H11A.
Immunogen	Recombinant protein corresponding to amino acids 332-585 of human ZC3H11A.
Host	Rabbit
Reactivity	Human
Specificity	This antibody is specific to ZC3H11A.
Form	Liquid

Purification	Protein A purification
Recommend Usage	Western Blot (1:500-1:1000) Immunohistochemistry (1:100-1:500) ELISA (1:20000-1:80000) The optimal working dilution should be determined by the end user.
Storage Buffer	In buffer containing 0.02% sodium azide
Storage Instruction	Store at 4°C for three months. For long term storage store at -20°C. Aliquot to avoid repeated freezing and thawing.
Note	This product contains sodium azide: a POISONOUS AND HAZARDOUS SUBSTANCE which should be handled by trained staff only.

Applications

- Western Blot (Tissue lysate)

Western blot analysis of human fetal brain (Lane 1) and fetal lung (Lane 2) and fetal kidney (Lane 3) lysates with ZC3H11A polyclonal antibody (Cat # PAB18537) at 1 : 500 dilution.

- Immunohistochemistry (Formalin/PFA-fixed paraffin-embedded sections)

Immunohistochemical analysis of paraffin-embedded human breast carcinoma showing cytoplasmic staining with ZC3H11A polyclonal antibody (Cat # PAB18537) at a 1 : 100 dilution.

- Enzyme-linked Immunoabsorbent Assay

Gene Info — ZC3H11A

Entrez GeneID	9877
GeneBank Accession#	BC014268
Gene Name	ZC3H11A
Gene Alias	DKFZp686D03108, DKFZp686F14109, DKFZp781G2455, KIAA0663, ZC3HDC11A
Gene Description	zinc finger CCCH-type containing 11A
Gene Ontology	Hyperlink
Other Designations	OTTHUMP00000034097 OTTHUMP00000034213 OTTHUMP00000034214 OTTHUMP00000034215 zinc finger CCCH-type domain containing 11A

Publication Reference

- [Follow-up of a major linkage peak on chromosome 1 reveals suggestive QTLs associated with essential hypertension: GenNet study.](#)

Ehret GB, O'Connor AA, Weder A, Cooper RS, Chakravarti A.

European Journal of Human Genetics 2009 Jun; 17(12):1650.

Disease

- [Genetic Predisposition to Disease](#)
- [Hypertension](#)