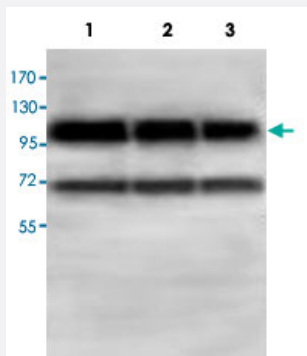


ABCF1 polyclonal antibody

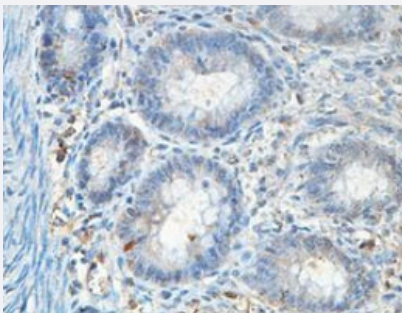
Catalog # PAB18535 Size 100 ug

Applications



Western Blot (Cell lysate)

Western blot analysis of HepG2 (Lane 1) and 293T (Lane 2) and HeLa cell lysates with ABCF1 polyclonal antibody (Cat # PAB18535) at 1 : 500 dilution.



Immunohistochemistry (Formalin/PFA-fixed paraffin-embedded sections)

Immunohistochemical analysis of paraffin-embedded human fetal colon showing cytoplasmic staining with ABCF1 polyclonal antibody (Cat # PAB18535) at a 1 : 100 dilution.

Specification

Product Description	Rabbit polyclonal antibody raised against partial recombinant ABCF1.
Immunogen	Recombinant protein corresponding to amino acids 580-837 of human ABCF1.
Host	Rabbit
Reactivity	Human
Specificity	This antibody is specific to ABCF1.
Form	Liquid

Purification	Protein A purification
Recommend Usage	Western Blot (1:1000-1:2000) Immunohistochemistry (1:100-1:500) ELISA (1:20000-1:80000) The optimal working dilution should be determined by the end user.
Storage Buffer	In buffer containing 0.02% sodium azide
Storage Instruction	Store at 4°C for three months. For long term storage store at -20°C. Aliquot to avoid repeated freezing and thawing.
Note	This product contains sodium azide: a POISONOUS AND HAZARDOUS SUBSTANCE which should be handled by trained staff only.

Applications

- Western Blot (Cell lysate)

Western blot analysis of HepG2 (Lane 1) and 293T (Lane 2) and HeLa cell lysates with ABCF1 polyclonal antibody (Cat # PAB18535) at 1 : 500 dilution.

- Immunohistochemistry (Formalin/PFA-fixed paraffin-embedded sections)

Immunohistochemical analysis of paraffin-embedded human fetal colon showing cytoplasmic staining with ABCF1 polyclonal antibody (Cat # PAB18535) at a 1 : 100 dilution.

- Enzyme-linked Immunoabsorbent Assay

Gene Info — ABCF1

Entrez GeneID	23
GeneBank Accession#	BC034488
Gene Name	ABCF1
Gene Alias	ABC27, ABC50
Gene Description	ATP-binding cassette, sub-family F (GCN20), member 1
Omim ID	603429
Gene Ontology	Hyperlink

Gene Summary

The protein encoded by this gene is a member of the superfamily of ATP-binding cassette (ABC) transporters. ABC proteins transport various molecules across extra- and intra-cellular membranes. ABC genes are divided into seven distinct subfamilies (ABC1, MDR/TAP, MRP, ALD, OABP, GCN20, White). This protein is a member of the GCN20 subfamily. Unlike other members of the superfamily, this protein lacks the transmembrane domains which are characteristic of most ABC transporters. This protein may be regulated by tumor necrosis factor-alpha and play a role in enhancement of protein synthesis and the inflammation process. [provided by RefSeq]

Other Designations

ATP-binding cassette 50 (TNF-alpha stimulated)|ATP-binding cassette, sub-family F, member 1|OTTHUMP00000029110|OTTHUMP00000029111|TNFalpha-inducible ATP-binding protein

Publication Reference

- [Generation and initial analysis of more than 15,000 full-length human and mouse cDNA sequences.](#)

Strausberg RL, Feingold EA, Grouse LH, Derge JG, Klausner RD, Collins FS, Wagner L, Shenmen CM, Schuler GD, Altschul SF, Zeeberg B, Buetow KH, Schaefer CF, Bhat NK, Hopkins RF, Jordan H, Moore T, Max SI, Wang J, Hsieh F, Diatchenko L, Marusina K, Farmer AA, Rubin GM, Hong L, Stapleton M, Soares MB, Bonaldo MF, Casavant TL, Scheetz TE, Brownstein MJ, Ustin TB, Toshiyuki S, Carninci P, Prange C, Raha SS, Loquellano NA, Peters GJ, Abramson RD, Mullahy SJ, Bosak SA, McEwan PJ, McKernan KJ, Malek JA,

PNAS 2002 Dec; 99(26):16899.

Disease

- [Genetic Predisposition to Disease](#)
- [Lupus Erythematosus](#)
- [Spondylitis](#)