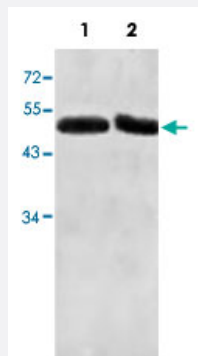


# ACTL7A polyclonal antibody

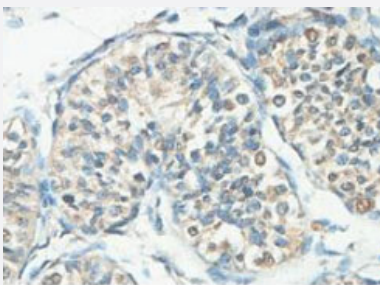
Catalog # PAB18530      Size 100 ug

## Applications



### Western Blot (Tissue lysate)

Western blot analysis of human fetal liver (Lane 1) and fetal testis (Lane 2) lysate with ACTL7A polyclonal antibody (Cat # PAB18530) at 1 : 500 dilution.



### Immunohistochemistry (Formalin/PFA-fixed paraffin-embedded sections)

Immunohistochemical analysis of paraffin-embedded human fetal testis showing cytoplasmic staining with ACTL7A polyclonal antibody (Cat # PAB18530) at a 1 : 100 dilution.

## Specification

<b>Product Description</b>	Rabbit polyclonal antibody raised against partial recombinant ACTL7A.
<b>Immunogen</b>	Recombinant protein corresponding to amino acids 42-283 of human ACTL7A.
<b>Host</b>	Rabbit
<b>Reactivity</b>	Human
<b>Specificity</b>	This antibody is specific to ACTL7A.
<b>Form</b>	Liquid

Purification	Protein A purification
Recommend Usage	Western Blot (1:500-1:1000) Immunohistochemistry (1:100-1:500) ELISA (1:20000-1:80000) The optimal working dilution should be determined by the end user.
Storage Buffer	In buffer containing 0.02% sodium azide
Storage Instruction	Store at 4°C for three months. For long term storage store at -20°C. Aliquot to avoid repeated freezing and thawing.
Note	This product contains sodium azide: a POISONOUS AND HAZARDOUS SUBSTANCE which should be handled by trained staff only.

## Applications

- Western Blot (Tissue lysate)

Western blot analysis of human fetal liver (Lane 1) and fetal testis (Lane 2) lysate with ACTL7A polyclonal antibody (Cat # PAB18530) at 1 : 500 dilution.

- Immunohistochemistry (Formalin/PFA-fixed paraffin-embedded sections)

Immunohistochemical analysis of paraffin-embedded human fetal testis showing cytoplasmic staining with ACTL7A polyclonal antibody (Cat # PAB18530) at a 1 : 100 dilution.

- Enzyme-linked Immunoabsorbent Assay

## Gene Info — ACTL7A

Entrez GeneID	<a href="#">10881</a>
GeneBank Accession#	<a href="#">BC014610</a>
Gene Name	ACTL7A
Gene Alias	-
Gene Description	actin-like 7A
Omim ID	<a href="#">604303</a>
Gene Ontology	<a href="#">Hyperlink</a>

**Gene Summary**

The protein encoded by this gene is a member of a family of actin-related proteins (ARPs) which share significant amino acid sequence identity to conventional actins. Both actins and ARPs have an actin fold, which is an ATP-binding cleft, as a common feature. The ARPs are involved in diverse cellular processes, including vesicular transport, spindle orientation, nuclear migration and chromatin remodeling. This gene (ACTL7A), and related gene, ACTL7B, are intronless, and are located approximately 4 kb apart in a head-to-head orientation within the familial dysautonomia candidate region on 9q31. Based on mutational analysis of the ACTL7A gene in patients with this disorder, it was concluded that it is unlikely to be involved in the pathogenesis of dysautonomia. The ACTL7A gene is expressed in a wide variety of adult tissues, however, its exact function is not known. [provided by RefSeq]

**Other Designations**

actin-like 7-alpha

**Publication Reference**

- [Applying novel genome-wide linkage strategies to search for loci influencing type 2 diabetes and adult height in American Samoa.](#)

Aberg K, Sun G, Smelser D, Indugula SR, Tsai HJ, Steele MS, Tuitele J, Deka R, McGarvey ST, Weeks DE.

Human Biology 2008 Apr; 80(2):99.