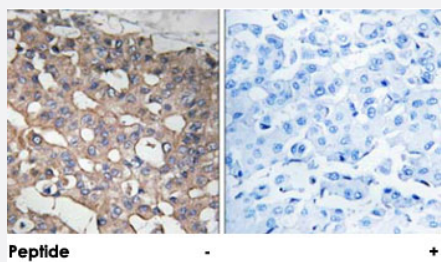


# STMN1 polyclonal antibody

Catalog # PAB18510

Size 100 ug

## Applications



### Immunohistochemistry (Formalin/PFA-fixed paraffin-embedded sections)

Immunohistochemical analysis of paraffin-embedded human breast carcinoma tissue using STMN1 polyclonal antibody (Cat # PAB18510).

Peptide "+" means "peptide blocking".

## Specification

**Product Description** Rabbit polyclonal antibody raised against synthetic peptide of STMN1.

**Immunogen** A synthetic peptide corresponding to human STMN1.

**Host** Rabbit

**Reactivity** Human, Mouse, Rat

**Specificity** This antibody is specific to STMN1.

**Form** Liquid

**Purification** Affinity purification

**Concentration** 1 mg/mL

**Recommend Usage** Immunohistochemistry (1:50-1:100)  
ELISA (1:20000)  
The optimal working dilution should be determined by the end user.

**Storage Buffer** In PBS, 150mM NaCl, pH 7.4 (50% glycerol, 0.02% sodium azide)

**Storage Instruction**

Store at -20°C.  
Aliquot to avoid repeated freezing and thawing.

**Note**

This product contains sodium azide: a POISONOUS AND HAZARDOUS SUBSTANCE which should be handled by trained staff only.

## Applications

- Immunohistochemistry (Formalin/PFA-fixed paraffin-embedded sections)

Immunohistochemical analysis of paraffin-embedded human breast carcinoma tissue using STMN1 polyclonal antibody (Cat # PAB18510).

Peptide "+" means "peptide blocking".

- Enzyme-linked Immunoabsorbent Assay

## Gene Info — STMN1

**Entrez GeneID**[3925](#)**Protein Accession#**[P16949](#)**Gene Name**

STMN1

**Gene Alias**

LAP18, Lag, OP18, PP17, PP19, PR22, SMN

**Gene Description**

stathmin 1/oncoprotein 18

**Omim ID**[151442](#)**Gene Ontology**[Hyperlink](#)**Gene Summary**

This gene belongs to the stathmin family of genes. It encodes a ubiquitous cytosolic phosphoprotein proposed to function as an intracellular relay integrating regulatory signals of the cellular environment. The encoded protein is involved in the regulation of the microtubule filament system by destabilizing microtubules. It prevents assembly and promotes disassembly of microtubules. Multiple transcript variants encoding different isoforms have been found for this gene. [provided by RefSeq]

**Other Designations**

OTTHUMP00000008527|OTTHUMP00000008528|OTTHUMP00000008530|leukemia-associated phosphoprotein p18|metablastin|oncoprotein 18|phosphoprotein 19|prosolin|stathmin 1

## Pathway

- [MAPK signaling pathway](#)

## Disease

- [Anorexia Nervosa](#)
- [Bulimia](#)
- [Genetic Predisposition to Disease](#)
- [Startle Reaction](#)