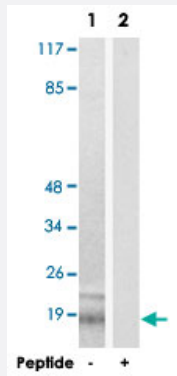


STMN1 polyclonal antibody

Catalog # PAB18501 Size 100 ug

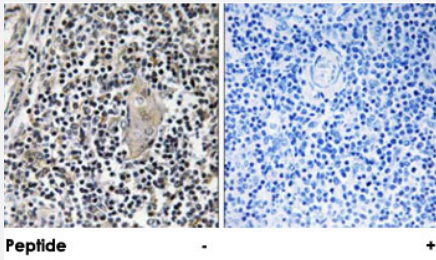
Applications



Western Blot (Cell lysate)

Western blot analysis of extracts from COS-7 cells, using STMN1 polyclonal antibody (Cat # PAB18501).

Peptide "+" means "peptide blocking".



Immunohistochemistry (Formalin/PFA-fixed paraffin-embedded sections)

Immunohistochemical analysis of paraffin-embedded human thymus gland tissue using STMN1 polyclonal antibody (Cat # PAB18501).

Peptide "+" means "peptide blocking".

Specification

Product Description	Rabbit polyclonal antibody raised against synthetic peptide of STMN1.
Immunogen	A synthetic peptide corresponding to residues surrounding S15 of human STMN1.
Host	Rabbit
Reactivity	Human, Mouse, Rat
Specificity	This antibody is specific to STMN1.
Form	Liquid

Purification	Affinity purification
Concentration	1 mg/mL
Recommend Usage	Western Blot (1:500-1:1000) Immunohistochemistry (1:50-1:100) Immunofluorescence (1:500-1:1000) ELISA (1:40000) The optimal working dilution should be determined by the end user.
Storage Buffer	In PBS, 150mM NaCl, pH 7.4 (50% glycerol, 0.02% sodium azide)
Storage Instruction	Store at -20°C. Aliquot to avoid repeated freezing and thawing.
Note	This product contains sodium azide: a POISONOUS AND HAZARDOUS SUBSTANCE which should be handled by trained staff only.

Applications

- Western Blot (Cell lysate)

Western blot analysis of extracts from COS-7 cells, using STMN1 polyclonal antibody (Cat # PAB18501).
Peptide "+" means "peptide blocking".

- Immunohistochemistry (Formalin/PFA-fixed paraffin-embedded sections)

Immunohistochemical analysis of paraffin-embedded human thymus gland tissue using STMN1 polyclonal antibody (Cat # PAB18501).
Peptide "+" means "peptide blocking".

- Immunofluorescence

- Enzyme-linked Immunoabsorbent Assay

Gene Info — STMN1

Entrez GeneID	3925
Protein Accession#	P16949
Gene Name	STMN1
Gene Alias	LAP18, Lag, OP18, PP17, PP19, PR22, SMN
Gene Description	stathmin 1/oncoprotein 18

Omim ID	151442
Gene Ontology	Hyperlink
Gene Summary	This gene belongs to the stathmin family of genes. It encodes a ubiquitous cytosolic phosphoprotein proposed to function as an intracellular relay integrating regulatory signals of the cellular environment. The encoded protein is involved in the regulation of the microtubule filament system by destabilizing microtubules. It prevents assembly and promotes disassembly of microtubules. Multiple transcript variants encoding different isoforms have been found for this gene. [provided by RefSeq]
Other Designations	OTTHUMP00000008527 OTTHUMP00000008528 OTTHUMP00000008530 leukemia-associated phosphoprotein p18 metablastin oncoprotein 18 phosphoprotein 19 prosolin stathmin 1

Publication Reference

- [Phosphorylation of p66Shc and forkhead proteins mediates Abeta toxicity.](#)
 Smith WW, Norton DD, Gorospe M, Jiang H, Nemoto S, Holbrook NJ, Finkel T, Kusiak JW.
 The Journal of Cell Biology 2005 Apr; 169(2):331.
- [Direct transcriptional regulation of Bim by FoxO3a mediates STI571-induced apoptosis in Bcr-Abl-expressing cells.](#)
 Essafi A, Fernandez de Mattos S, Hassen YA, Soeiro I, Mufti GJ, Thomas NS, Medema RH, Lam EW.
 Oncogene 2005 Mar; 24(14):2317.
- [Protein kinase SGK mediates survival signals by phosphorylating the forkhead transcription factor FKHL1 \(FOXO3a\).](#)
 Brunet A, Park J, Tran H, Hu LS, Hemmings BA, Greenberg ME.
 Molecular and Cellular Biology 2001 Feb; 21(3):952.

Pathway

- [MAPK signaling pathway](#)

Disease

- [Anorexia Nervosa](#)
- [Bulimia](#)

- [Genetic Predisposition to Disease](#)
- [Startle Reaction](#)