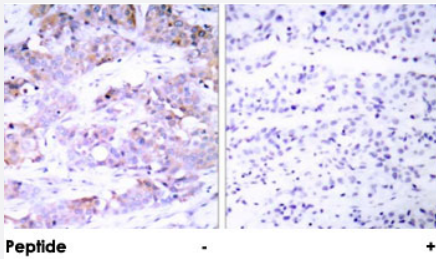


# ELK1 polyclonal antibody

Catalog # PAB18471      Size 100 ug

## Applications



### Immunohistochemistry (Formalin/PFA-fixed paraffin-embedded sections)

Immunohistochemical analysis of paraffin-embedded human breast carcinoma using ELK1 polyclonal antibody (Cat # PAB18471).

Peptide "+" means "peptide blocking".

## Specification

Product Description	Rabbit polyclonal antibody raised against synthetic peptide of ELK1.
Immunogen	A synthetic peptide corresponding to residues surrounding T417 of human ELK1.
Host	Rabbit
Reactivity	Human, Mouse, Rat
Specificity	This antibody is specific to ELK1 around T417.
Form	Liquid
Purification	Affinity purification
Concentration	1 mg/mL
Recommend Usage	Immunohistochemistry (1:50-1:100) ELISA (1:20000) The optimal working dilution should be determined by the end user.
Storage Buffer	In PBS, 150mM NaCl, pH 7.4 (50% glycerol, 0.02% sodium azide)

**Storage Instruction**

Store at -20°C.  
Aliquot to avoid repeated freezing and thawing.

**Note**

This product contains sodium azide: a POISONOUS AND HAZARDOUS SUBSTANCE which should be handled by trained staff only.

## Applications

- Immunohistochemistry (Formalin/PFA-fixed paraffin-embedded sections)

Immunohistochemical analysis of paraffin-embedded human breast carcinoma using ELK1 polyclonal antibody (Cat # PAB18471).

Peptide "+" means "peptide blocking".

- Enzyme-linked Immunoabsorbent Assay

## Gene Info — ELK1

**Entrez GeneID**[2002](#)**Protein Accession#**[P19419](#)**Gene Name**

ELK1

**Gene Alias**

-

**Gene Description**

ELK1, member of ETS oncogene family

**Omim ID**[311040](#)**Gene Ontology**[Hyperlink](#)**Gene Summary**

This gene is a member of the Ets family of transcription factors and of the ternary complex factor (TCF) subfamily. Proteins of the TCF subfamily form a ternary complex by binding to the the serum response factor and the serum response element in the promoter of the c-fos proto-oncogene. The protein encoded by this gene is a nuclear target for the ras-raf-MAPK signaling cascade. Alternatively spliced transcript variants encoding the same protein have been found for this gene. [provided by RefSeq]

**Other Designations**

ELK1 protein|OTTHUMP00000023224|OTTHUMP00000023225

## Pathway

- [Endometrial cancer](#)

- [ErbB signaling pathway](#)
- [Focal adhesion](#)
- [GnRH signaling pathway](#)
- [Insulin signaling pathway](#)
- [MAPK signaling pathway](#)
- [Prion diseases](#)

## Disease

- [Cardiovascular Diseases](#)
- [Diabetes Mellitus](#)
- [Edema](#)