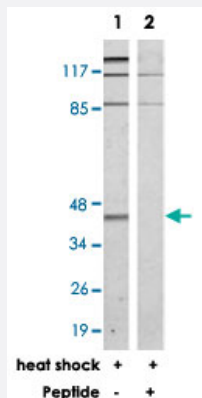


# ELK1 polyclonal antibody

Catalog # PAB18470

Size 100 ug

## Applications



### Western Blot (Cell lysate)

Western blot analysis of extracts from HeLa cells, treated with heat shock, using ELK1 polyclonal antibody (Cat # PAB18470).

Peptide "+" means "peptide blocking".

## Specification

<b>Product Description</b>	Rabbit polyclonal antibody raised against synthetic peptide of ELK1.
<b>Immunogen</b>	A synthetic peptide corresponding to residues surrounding S389 of human ELK1.
<b>Host</b>	Rabbit
<b>Reactivity</b>	Human, Mouse, Rat
<b>Specificity</b>	This antibody is specific to ELK1.
<b>Form</b>	Liquid
<b>Purification</b>	Affinity purification
<b>Concentration</b>	1 mg/mL
<b>Recommend Usage</b>	Western Blot (1:500-1:1000) Immunohistochemistry (1:50-1:100) ELISA (1:20000) The optimal working dilution should be determined by the end user.

Storage Buffer	In PBS, 150mM NaCl, pH 7.4 (50% glycerol, 0.02% sodium azide)
Storage Instruction	Store at -20°C. Aliquot to avoid repeated freezing and thawing.
Note	This product contains sodium azide: a POISONOUS AND HAZARDOUS SUBSTANCE which should be handled by trained staff only.

## Applications

- Western Blot (Cell lysate)

Western blot analysis of extracts from HeLa cells, treated with heat shock, using ELK1 polyclonal antibody (Cat # PAB18470).  
Peptide "+" means "peptide blocking".

- Immunohistochemistry

- Immunoprecipitation

- Enzyme-linked Immunoabsorbent Assay

## Gene Info — ELK1

Entrez GeneID	<a href="#">2002</a>
Protein Accession#	<a href="#">P19419</a>
Gene Name	ELK1
Gene Alias	-
Gene Description	ELK1, member of ETS oncogene family
Omim ID	<a href="#">311040</a>
Gene Ontology	<a href="#">Hyperlink</a>
Gene Summary	This gene is a member of the Ets family of transcription factors and of the ternary complex factor (TCF) subfamily. Proteins of the TCF subfamily form a ternary complex by binding to the the serum response factor and the serum reponse element in the promoter of the c-fos proto-oncogene. The protein encoded by this gene is a nuclear target for the ras-raf-MAPK signaling cascade. Alternatively spliced transcript variants encoding the same protein have been found for this gene. [provided by RefSeq]
Other Designations	ELK1 protein OTTHUMP00000023224 OTTHUMP00000023225

## Pathway

- [Endometrial cancer](#)
- [ErbB signaling pathway](#)
- [Focal adhesion](#)
- [GnRH signaling pathway](#)
- [Insulin signaling pathway](#)
- [MAPK signaling pathway](#)
- [Prion diseases](#)

## Disease

- [Cardiovascular Diseases](#)
- [Diabetes Mellitus](#)
- [Edema](#)