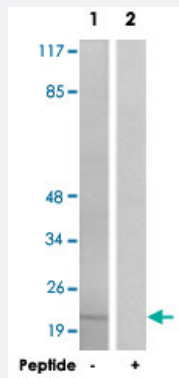


# PPP1R14A polyclonal antibody

Catalog # PAB18461      Size 100 ug

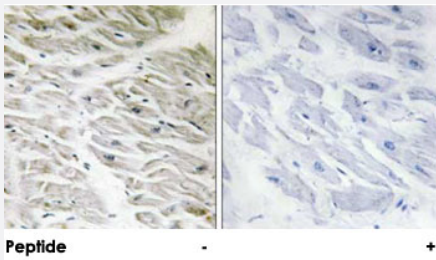
## Applications



### Western Blot (Cell lysate)

Western blot analysis of extracts from HT-29 cells, using PPP1R14A polyclonal antibody (Cat # PAB18461).

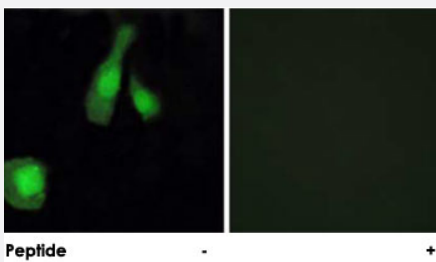
Peptide "+" means "peptide blocking".



### Immunohistochemistry (Formalin/PFA-fixed paraffin-embedded sections)

Immunohistochemical analysis of paraffin-embedded human heart tissue using PPP1R14A polyclonal antibody (Cat # PAB18461).

Peptide "+" means "peptide blocking".



### Immunofluorescence

Immunofluorescence analysis of HeLa cells, using PPP1R14A polyclonal antibody (Cat # PAB18461).

Peptide "+" means "peptide blocking".

## Specification

### Product Description

Rabbit polyclonal antibody raised against synthetic peptide of PPP1R14A.

<b>Immunogen</b>	A synthetic peptide corresponding to residues surrounding T38 of human PPP1R14A.
<b>Host</b>	Rabbit
<b>Reactivity</b>	Human, Mouse, Rat
<b>Specificity</b>	This antibody is specific to PPP1R14A.
<b>Form</b>	Liquid
<b>Purification</b>	Affinity purification
<b>Concentration</b>	1 mg/mL
<b>Recommend Usage</b>	Western Blot (1:500-1:1000) Immunohistochemistry (1:50-1:100) Immunofluorescence (1:500-1:1000) ELISA (1:40000) The optimal working dilution should be determined by the end user.
<b>Storage Buffer</b>	In PBS, 150mM NaCl, pH 7.4 (50% glycerol, 0.02% sodium azide)
<b>Storage Instruction</b>	Store at -20°C. Aliquot to avoid repeated freezing and thawing.
<b>Note</b>	This product contains sodium azide: a POISONOUS AND HAZARDOUS SUBSTANCE which should be handled by trained staff only.

## Applications

- Western Blot (Cell lysate)

Western blot analysis of extracts from HT-29 cells, using PPP1R14A polyclonal antibody (Cat # PAB18461).

Peptide "+" means "peptide blocking".

- Immunohistochemistry (Formalin/PFA-fixed paraffin-embedded sections)

Immunohistochemical analysis of paraffin-embedded human heart tissue using PPP1R14A polyclonal antibody (Cat # PAB18461).

Peptide "+" means "peptide blocking".

- Immunofluorescence

Immunofluorescence analysis of HeLa cells, using PPP1R14A polyclonal antibody (Cat # PAB18461).

Peptide "+" means "peptide blocking".

- Enzyme-linked Immunoabsorbent Assay

## Gene Info — PPP1R14A

Entrez GeneID	<a href="#">94274</a>
Protein Accession#	<a href="#">Q96A00</a>
Gene Name	PPP1R14A
Gene Alias	CPI-17, CPI17, PPP1INL
Gene Description	protein phosphatase 1, regulatory (inhibitor) subunit 14A
Omim ID	<a href="#">608153</a>
Gene Ontology	<a href="#">Hyperlink</a>
Gene Summary	PPP1R14A is a phosphorylation-dependent inhibitor of smooth muscle myosin phosphatase (see MIM 603768). Inhibition leads to increased myosin phosphorylation and enhances smooth muscle contraction in the absence of increased intracellular Ca(2+) concentration.[supplied by OMIM]
Other Designations	17-KDa protein 17-kDa PKC-potentiated inhibitory protein of PP1 PKC-potentiated inhibitory protein of PP1

## Publication Reference

- [PDE4 inhibitors activate a mitochondrial apoptotic pathway in chronic lymphocytic leukemia cells that is regulated by protein phosphatase 2A.](#)

Moon EY, Lerner A.

Blood 2003 May; 101(10):4122.

## Pathway

- [Vascular smooth muscle contraction](#)