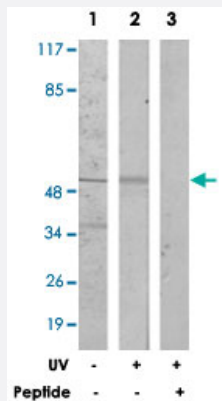


CDC25C polyclonal antibody

Catalog # PAB18459 Size 100 ug

Applications



Western Blot (Cell lysate)

Western blot analysis of extracts from HeLa cells (Lane 1) and Jurkat cells (Lane 2 and 3) treated with UV (15 mins), using CDC25C polyclonal antibody (Cat # PAB18459).

Peptide "+" means "peptide blocking".

Specification

Product Description	Rabbit polyclonal antibody raised against synthetic peptide of CDC25C.
Immunogen	A synthetic peptide corresponding to residues surrounding S216 of human CDC25C.
Host	Rabbit
Reactivity	Human
Specificity	This antibody is specific to CDC25C.
Form	Liquid
Purification	Affinity purification
Concentration	1 mg/mL
Recommend Usage	Western Blot (1:500-1:1000) Immunohistochemistry (1:50-1:100) ELISA (1:40000) The optimal working dilution should be determined by the end user.

Storage Buffer	In PBS, 150mM NaCl, pH 7.4 (50% glycerol, 0.02% sodium azide)
Storage Instruction	Store at -20°C. Aliquot to avoid repeated freezing and thawing.
Note	This product contains sodium azide: a POISONOUS AND HAZARDOUS SUBSTANCE which should be handled by trained staff only.

Applications

- Western Blot (Cell lysate)

Western blot analysis of extracts from HeLa cells (Lane 1) and Jurkat cells (Lane 2 and 3) treated with UV (15 mins), using CDC25C polyclonal antibody (Cat # PAB18459).

Peptide "+" means "peptide blocking".

- Immunohistochemistry

- Enzyme-linked Immunoabsorbent Assay

Gene Info — CDC25C

Entrez GeneID	995
Protein Accession#	P30307
Gene Name	CDC25C
Gene Alias	CDC25
Gene Description	cell division cycle 25 homolog C (S. pombe)
Omim ID	157680
Gene Ontology	Hyperlink
Gene Summary	This gene is highly conserved during evolution and it plays a key role in the regulation of cell division. The encoded protein is a tyrosine phosphatase and belongs to the Cdc25 phosphatase family. It directs dephosphorylation of cyclin B-bound CDC2 and triggers entry into mitosis. It is also thought to suppress p53-induced growth arrest. Multiple alternatively spliced transcript variants of this gene have been described, however, the full-length nature of many of them is not known. [provided by RefSeq]
Other Designations	cell division cycle 25C cell division cycle 25C protein dual specificity phosphatase CDC25C m-phase inducer phosphatase 3 mitosis inducer CDC25 phosphotyrosine phosphatase

Publication Reference

- [ATF4 is a substrate of RSK2 and an essential regulator of osteoblast biology; implication for Coffin-Lowry Syndrome.](#)

Yang X, Matsuda K, Bialek P, Jacquot S, Masuoka HC, Schinke T, Li L, Brancorsini S, Sassone-Corsi P, Townes TM, Hanauer A, Karsenty G.

Cell 2004 Apr; 117(3):387.

Pathway

- [Cell cycle](#)

Disease

- [Adenocarcinoma](#)
- [Esophageal Neoplasms](#)
- [Genetic Predisposition to Disease](#)
- [Lung Neoplasms](#)
- [Pulmonary Disease](#)
- [Urinary Bladder Neoplasms](#)
- [Werner syndrome](#)