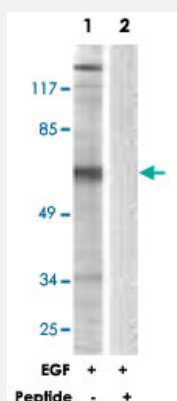


# STAM2 polyclonal antibody

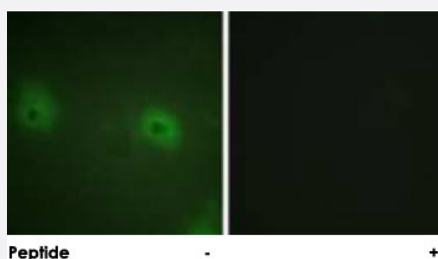
Catalog # PAB18443      Size 100 ug

## Applications



### Western Blot (Cell lysate)

Western blot analysis of extracts from NIH/3T3 cells, treated with EGF (200 ng/mL, 30 mins), using STAM2 polyclonal antibody (Cat # PAB18443). Peptide "+" means "peptide blocking".



### Immunofluorescence

Immunofluorescence analysis of HUVEC cells, using STAM2 polyclonal antibody (Cat # PAB18443). Peptide "+" means "peptide blocking".

## Specification

Product Description	Rabbit polyclonal antibody raised against synthetic peptide of STAM2.
Immunogen	A synthetic peptide corresponding to residues surrounding Y192 of human STAM2.
Host	Rabbit
Reactivity	Human, Mouse
Specificity	This antibody is specific to STAM2.
Form	Liquid

<b>Purification</b>	Affinity purification
<b>Concentration</b>	1 mg/mL
<b>Recommend Usage</b>	Western Blot (1:500-1:1000) Immunofluorescence (1:500-1:1000) ELISA (1:5000) The optimal working dilution should be determined by the end user.
<b>Storage Buffer</b>	In PBS, 150mM NaCl, pH 7.4 (50% glycerol, 0.02% sodium azide)
<b>Storage Instruction</b>	Store at -20°C. Aliquot to avoid repeated freezing and thawing.
<b>Note</b>	This product contains sodium azide: a POISONOUS AND HAZARDOUS SUBSTANCE which should be handled by trained staff only.

## Applications

- Western Blot (Cell lysate)

Western blot analysis of extracts from NIH/3T3 cells, treated with EGF (200 ng/mL, 30 mins), using STAM2 polyclonal antibody (Cat # PAB18443).

Peptide "+" means "peptide blocking".

- Immunofluorescence

Immunofluorescence analysis of HUVEC cells, using STAM2 polyclonal antibody (Cat # PAB18443).

Peptide "+" means "peptide blocking".

- Enzyme-linked Immunoabsorbent Assay

## Gene Info — STAM2

<b>Entrez GeneID</b>	<a href="#">10254</a>
<b>Protein Accession#</b>	<a href="#">Q75886</a>
<b>Gene Name</b>	STAM2
<b>Gene Alias</b>	DKFZp564C047, Hbp, STAM2A, STAM2B
<b>Gene Description</b>	signal transducing adaptor molecule (SH3 domain and ITAM motif) 2
<b>Omim ID</b>	<a href="#">606244</a>
<b>Gene Ontology</b>	<a href="#">Hyperlink</a>

**Gene Summary**

The protein encoded by this gene is closely related to STAM, an adaptor protein involved in the downstream signaling of cytokine receptors, both of which contain a SH3 domain and the immunoreceptor tyrosine-based activation motif (ITAM). Similar to STAM, this protein acts downstream of JAK kinases, and is phosphorylated in response to cytokine stimulation. This protein and STAM thus are thought to exhibit compensatory effects on the signaling pathway downstream of JAK kinases upon cytokine stimulation. [provided by RefSeq]

**Other Designations**

Hrs-binding protein|STAM-like protein containing SH3 and ITAM domains 2|signal transducing adaptor molecule 2

**Pathway**

- [Endocytosis](#)
- [Jak-STAT signaling pathway](#)