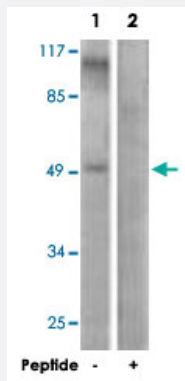


GFAP polyclonal antibody

Catalog # PAB18435 Size 100 ug

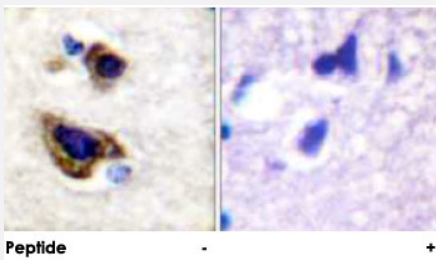
Applications



Western Blot (Cell lysate)

Western blot analysis of extracts from COLO 205 cells, using GFAP polyclonal antibody (Cat # PAB18435).

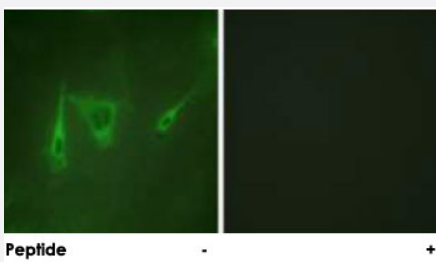
Peptide "+" means "peptide blocking".



Immunohistochemistry (Formalin/PFA-fixed paraffin-embedded sections)

Immunohistochemical analysis of paraffin-embedded human brain tissue using GFAP polyclonal antibody (Cat # PAB18435).

Peptide "+" means "peptide blocking".



Immunofluorescence

Immunofluorescence analysis of COS-7 cells, using GFAP polyclonal antibody (Cat # PAB18435).

Peptide "+" means "peptide blocking".

Specification

Product Description

Rabbit polyclonal antibody raised against synthetic peptide of GFAP.

Immunogen	A synthetic peptide corresponding to residues surrounding S38 of human GFAP.
Host	Rabbit
Reactivity	Human
Specificity	This antibody is specific to GFAP.
Form	Liquid
Purification	Affinity purification
Concentration	1 mg/mL
Recommend Usage	Western Blot (1:500-1:1000) Immunohistochemistry (1:50-1:100) Immunofluorescence (1:500-1:1000) ELISA (1:5000) The optimal working dilution should be determined by the end user.
Storage Buffer	In PBS, 150mM NaCl, pH 7.4 (50% glycerol, 0.02% sodium azide)
Storage Instruction	Store at -20°C. Aliquot to avoid repeated freezing and thawing.
Note	This product contains sodium azide: a POISONOUS AND HAZARDOUS SUBSTANCE which should be handled by trained staff only.

Applications

- Western Blot (Cell lysate)

Western blot analysis of extracts from COLO 205 cells, using GFAP polyclonal antibody (Cat # PAB18435).

Peptide "+" means "peptide blocking".

- Immunohistochemistry (Formalin/PFA-fixed paraffin-embedded sections)

Immunohistochemical analysis of paraffin-embedded human brain tissue using GFAP polyclonal antibody (Cat # PAB18435).

Peptide "+" means "peptide blocking".

- Immunofluorescence

Immunofluorescence analysis of COS-7 cells, using GFAP polyclonal antibody (Cat # PAB18435).

Peptide "+" means "peptide blocking".

- Enzyme-linked Immunoabsorbent Assay

Gene Info — GFAP

Entrez GeneID [2670](#)

Protein Accession# [P14136](#)

Gene Name GFAP

Gene Alias FLJ45472

Gene Description glial fibrillary acidic protein

Omim ID [137780](#) [203450](#)

Gene Ontology [Hyperlink](#)

Gene Summary This gene encodes one of the major intermediate filament proteins of mature astrocytes. It is used as a marker to distinguish astrocytes from other glial cells during development. Mutations in this gene cause Alexander disease, a rare disorder of astrocytes in the central nervous system. Alternative splicing results in multiple transcript variants encoding distinct isoforms. [provided by RefSeq]

Other Designations -

Publication Reference

- [Effects of NOTCH1 signaling inhibitor \$\gamma\$ -secretase inhibitor II on growth of cancer stem cells.](#)

Ding X, Ding C, Wang F, Deng W, Yu M, Meng Q, Sun P.

Oncology Letters 2018 Nov; 16(5):6095.

Application: IF, Human, U87 MG cells

Disease

- [Alzheimer disease](#)
- [Cognition](#)