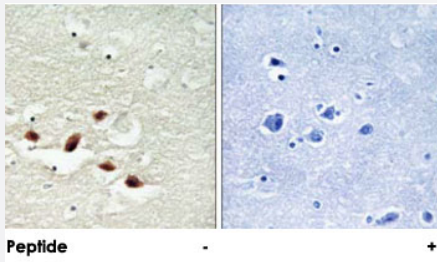


PDCD4 polyclonal antibody

Catalog # PAB18429 Size 100 ug

Applications



Immunohistochemistry (Formalin/PFA-fixed paraffin-embedded sections)

Immunohistochemical analysis of paraffin-embedded human brain tissue using PDCD4 polyclonal antibody (Cat # PAB18429).

Peptide "+" means "peptide blocking".

Specification

Product Description Rabbit polyclonal antibody raised against synthetic peptide of PDCD4.

Immunogen A synthetic peptide corresponding to human PDCD4.

Host Rabbit

Reactivity Human, Mouse, Rat

Specificity This antibody is specific to PDCD4.

Form Liquid

Purification Affinity purification

Concentration 1 mg/mL

Recommend Usage Immunohistochemistry (1:50-1:100)
ELISA (1:40000)
The optimal working dilution should be determined by the end user.

Storage Buffer In PBS, 150mM NaCl, pH 7.4 (50% glycerol, 0.02% sodium azide)

Storage Instruction

Store at -20°C.
Aliquot to avoid repeated freezing and thawing.

Note

This product contains sodium azide: a POISONOUS AND HAZARDOUS SUBSTANCE which should be handled by trained staff only.

Applications

- Immunohistochemistry (Formalin/PFA-fixed paraffin-embedded sections)

Immunohistochemical analysis of paraffin-embedded human brain tissue using PDCD4 polyclonal antibody (Cat # PAB18429).
Peptide "+" means "peptide blocking".

- Enzyme-linked Immunoabsorbent Assay

Gene Info — PDCD4

Entrez GeneID [27250](#)

Protein Accession# [Q53EL6](#)

Gene Name PDCD4

Gene Alias H731, MGC33046, MGC33047

Gene Description programmed cell death 4 (neoplastic transformation inhibitor)

Omim ID [608610](#)

Gene Ontology [Hyperlink](#)

Gene Summary This gene encodes a protein localized to the nucleus in proliferating cells. Expression of this gene is modulated by cytokines in natural killer and T cells. The gene product is thought to play a role in apoptosis but the specific role has not yet been determined. Two transcripts encoding different isoforms have been identified. [provided by RefSeq]

Other Designations OTTHUMP00000020483|nuclear antigen H731|programmed cell death 4

Disease

- [Alzheimer Disease](#)
- [Genetic Predisposition to Disease](#)