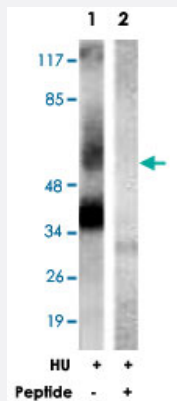


ZC3HC1 polyclonal antibody

Catalog # PAB18427 Size 100 ug

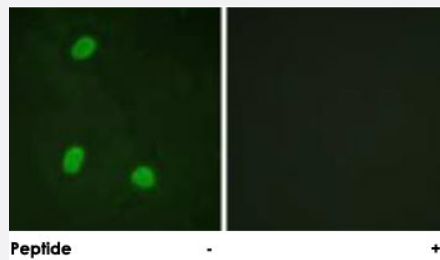
Applications



Western Blot (Cell lysate)

Western blot analysis of extracts from COS-7 cells, treated with HU (2 nM, 24 hours), using ZC3HC1 polyclonal antibody (Cat # PAB18427).

Peptide "+" means "peptide blocking".



Immunofluorescence

Immunofluorescence analysis of HeLa cells, using ZC3HC1 polyclonal antibody (Cat # PAB18427).

Peptide "+" means "peptide blocking".

Specification

Product Description	Rabbit polyclonal antibody raised against synthetic peptide of ZC3HC1.
Immunogen	A synthetic peptide corresponding to residues surrounding S354 of human ZC3HC1.
Host	Rabbit
Reactivity	Human, Mouse, Rat
Specificity	This antibody is specific to ZC3HC1.
Form	Liquid

Purification	Affinity purification
Concentration	1 mg/mL
Recommend Usage	Western Blot (1:500-1:1000) Immunofluorescence (1:500-1:1000) ELISA (1:20000) The optimal working dilution should be determined by the end user.
Storage Buffer	In PBS, 150mM NaCl, pH 7.4 (50% glycerol, 0.02% sodium azide)
Storage Instruction	Store at -20°C. Aliquot to avoid repeated freezing and thawing.
Note	This product contains sodium azide: a POISONOUS AND HAZARDOUS SUBSTANCE which should be handled by trained staff only.

Applications

- Western Blot (Cell lysate)

Western blot analysis of extracts from COS-7 cells, treated with HU (2 nM, 24 hours), using ZC3HC1 polyclonal antibody (Cat # PAB18427).

Peptide "+" means "peptide blocking".

- Immunofluorescence

Immunofluorescence analysis of HeLa cells, using ZC3HC1 polyclonal antibody (Cat # PAB18427).

Peptide "+" means "peptide blocking".

- Enzyme-linked Immunoabsorbent Assay

Gene Info — ZC3HC1

Entrez GeneID	51530
Protein Accession#	Q86WB0
Gene Name	ZC3HC1
Gene Alias	1110054L24Rik, HSPC216, NIPA
Gene Description	zinc finger, C3HC-type containing 1
Gene Ontology	Hyperlink
Gene Summary	O

Other Designations

hematopoietic stem/progenitor cell protein 216|nuclear interacting partner of anaplastic lymphom
a kinase (ALK)|nuclear interaction partner of ALK|zinc finger, C3HC type 1

Disease

- [Kidney Failure](#)