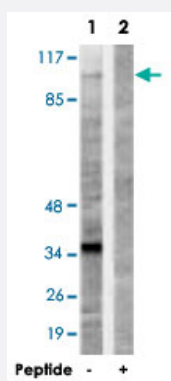


KIF20A polyclonal antibody

Catalog # PAB18406 Size 100 ug

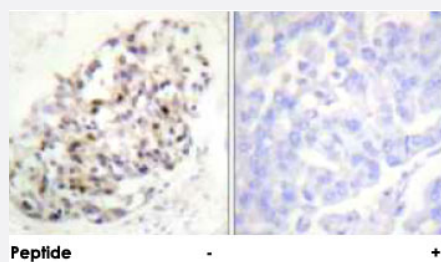
Applications



Western Blot (Cell lysate)

Western blot analysis of extracts from 293 cells, using KIF20A polyclonal antibody (Cat # PAB18406).

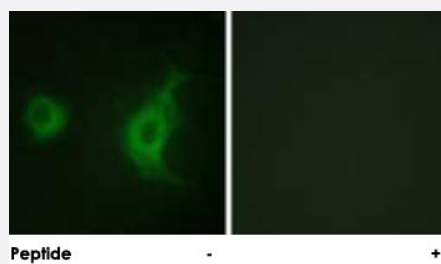
Peptide "+" means "peptide blocking".



Immunohistochemistry (Formalin/PFA-fixed paraffin-embedded sections)

Immunohistochemical analysis of paraffin-embedded human breast carcinoma tissue using KIF20A polyclonal antibody (Cat # PAB18406).

Peptide "+" means "peptide blocking".



Immunofluorescence

Immunofluorescence analysis of HUVEC cells, using KIF20A polyclonal antibody (Cat # PAB18406).

Peptide "+" means "peptide blocking".

Specification

Product Description

Rabbit polyclonal antibody raised against synthetic peptide of KIF20A.

Immunogen	A synthetic peptide corresponding to residues surrounding S528 of human KIF20A.
Host	Rabbit
Reactivity	Human
Specificity	This antibody is specific to KIF20A.
Form	Liquid
Purification	Affinity purification
Concentration	1 mg/mL
Recommend Usage	Western Blot (1:500-1:1000) Immunohistochemistry (1:50-1:100) Immunofluorescence (1:500-1:1000) ELISA (1:5000) The optimal working dilution should be determined by the end user.
Storage Buffer	In PBS, 150mM NaCl, pH 7.4 (50% glycerol, 0.02% sodium azide)
Storage Instruction	Store at -20°C. Aliquot to avoid repeated freezing and thawing.
Note	This product contains sodium azide: a POISONOUS AND HAZARDOUS SUBSTANCE which should be handled by trained staff only.

Applications

- Western Blot (Cell lysate)

Western blot analysis of extracts from 293 cells, using KIF20A polyclonal antibody (Cat # PAB18406).

Peptide "+" means "peptide blocking".

- Immunohistochemistry (Formalin/PFA-fixed paraffin-embedded sections)

Immunohistochemical analysis of paraffin-embedded human breast carcinoma tissue using KIF20A polyclonal antibody (Cat # PAB18406).

Peptide "+" means "peptide blocking".

- Immunofluorescence

Immunofluorescence analysis of HUVEC cells, using KIF20A polyclonal antibody (Cat # PAB18406).

Peptide "+" means "peptide blocking".

- Enzyme-linked Immunoabsorbent Assay

Gene Info — KIF20A

Entrez GeneID	10112
Protein Accession#	O95235
Gene Name	KIF20A
Gene Alias	FLJ21151, MKLP2, RAB6KIFL
Gene Description	kinesin family member 20A
Omim ID	605664
Gene Ontology	Hyperlink
Gene Summary	kinesin-like (rabkinesin6) mitotic kinesin-like protein 2
Other Designations	OTTHUMP00000159481 RAB6 interacting, kinesin-like (rabkinesin6) mitotic kinesin-like protein 2

Publication Reference

- [Systematic dielectrophoretic analysis of the Ara-C-induced NB4 cell apoptosis combined with gene expression profiling.](#)

Lv Y, Zeng L, Zhang G, Xu Y, Lu Y, Mitchelson K, Cheng J, Xing W.

International Journal of Nanomedicine 2013 Jun; 8:2333.

Application: IF, Human, NB4 cells