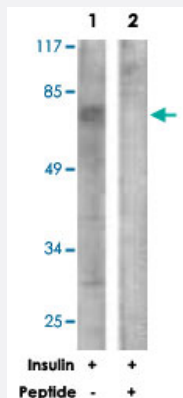


GRB10 polyclonal antibody

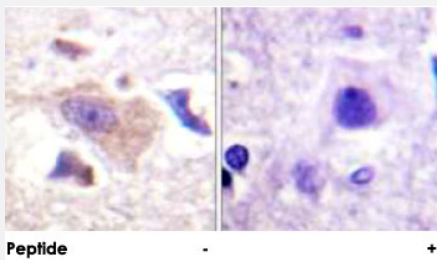
Catalog # PAB18386 Size 100 ug

Applications



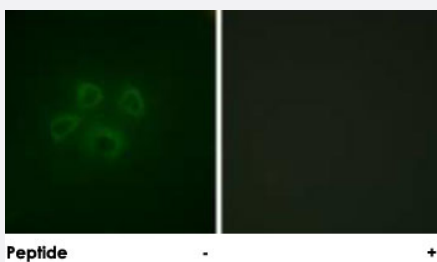
Western Blot (Cell lysate)

Western blot analysis of extracts from NIH/3T3 cells, treated with Insulin (0.01 U/mL, 15 mins), using GRB10 polyclonal antibody (Cat # PAB18386). Peptide "+" means "peptide blocking".



Immunohistochemistry (Formalin/PFA-fixed paraffin-embedded sections)

Immunohistochemical analysis of paraffin-embedded human brain tissue using GRB10 polyclonal antibody (Cat # PAB18386). Peptide "+" means "peptide blocking".



Immunofluorescence

Immunofluorescence analysis of HepG2 cells, using GRB10 polyclonal antibody (Cat # PAB18386). Peptide "+" means "peptide blocking".

Specification

Product Description

Rabbit polyclonal antibody raised against synthetic peptide of GRB10.

Immunogen	A synthetic peptide corresponding to residues surrounding Y67 of human GRB10.
Host	Rabbit
Reactivity	Human
Specificity	This antibody is specific to GRB10.
Form	Liquid
Purification	Affinity purification
Concentration	1 mg/mL
Recommend Usage	Western Blot (1:500-1:1000) Immunohistochemistry (1:50-1:100) Immunofluorescence (1:100-1:500) ELISA (1:5000) The optimal working dilution should be determined by the end user.
Storage Buffer	In PBS, 150mM NaCl, pH 7.4 (50% glycerol, 0.02% sodium azide)
Storage Instruction	Store at -20°C. Aliquot to avoid repeated freezing and thawing.
Note	This product contains sodium azide: a POISONOUS AND HAZARDOUS SUBSTANCE which should be handled by trained staff only.

Applications

- Western Blot (Cell lysate)

Western blot analysis of extracts from NIH/3T3 cells, treated with Insulin (0.01 U/mL, 15 mins), using GRB10 polyclonal antibody (Cat # PAB18386).

Peptide "+" means "peptide blocking".

- Immunohistochemistry (Formalin/PFA-fixed paraffin-embedded sections)

Immunohistochemical analysis of paraffin-embedded human brain tissue using GRB10 polyclonal antibody (Cat # PAB18386).

Peptide "+" means "peptide blocking".

- Immunofluorescence

Immunofluorescence analysis of HepG2 cells, using GRB10 polyclonal antibody (Cat # PAB18386).

Peptide "+" means "peptide blocking".

- Enzyme-linked Immunoabsorbent Assay

Gene Info — GRB10

Entrez GeneID [2887](#)

Protein Accession# [Q13322](#)

Gene Name GRB10

Gene Alias GRB-IR, Grb-10, IRBP, KIAA0207, MEG1, RSS

Gene Description growth factor receptor-bound protein 10

Omim ID [601523](#)

Gene Ontology [Hyperlink](#)

Gene Summary The product of this gene belongs to a small family of adapter proteins that are known to interact with a number of receptor tyrosine kinases and signaling molecules. This gene encodes a growth factor receptor-binding protein that interacts with insulin receptors and insulin-like growth-factor receptors. Overexpression of some isoforms of the encoded protein inhibits tyrosine kinase activity and results in growth suppression. This gene is imprinted in a highly isoform- and tissue-specific manner. Alternatively spliced transcript variants encoding different isoforms have been identified. [provided by RefSeq]

Other Designations GRB10 adaptor protein|insulin receptor-binding protein Grb-IR|maternally expressed gene 1

Disease

- [Birth Weight](#)
- [Diabetes Mellitus](#)
- [Overweight](#)