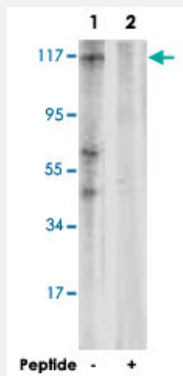


PTK2 polyclonal antibody

Catalog # PAB18355 Size 100 ug

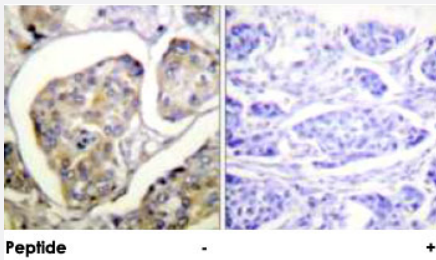
Applications



Western Blot (Cell lysate)

Western blot analysis of extracts from 293 cells, using PTK2 polyclonal antibody (Cat # PAB18355).

Peptide "+" means "peptide blocking".



Immunohistochemistry (Formalin/PFA-fixed paraffin-embedded sections)

Immunohistochemical analysis of paraffin-embedded human breast carcinoma tissue using PTK2 polyclonal antibody (Cat # PAB18355).

Peptide "+" means "peptide blocking".



Immunofluorescence

Immunofluorescence analysis of HeLa cells, using PTK2 polyclonal antibody (Cat # PAB18355).

Peptide "+" means "peptide blocking".

Specification

Product Description

Rabbit polyclonal antibody raised against synthetic peptide of PTK2.

Immunogen	A synthetic peptide corresponding to residues surrounding Y397 of human PTK2.
Host	Rabbit
Reactivity	Human, Mouse, Rat
Specificity	This antibody is specific to PTK2.
Form	Liquid
Purification	Affinity purification
Concentration	1 mg/mL
Recommend Usage	Western Blot (1:500-1:1000) Immunohistochemistry (1:50-1:100) Immunofluorescence (1:500-1:1000) ELISA (1:10000) The optimal working dilution should be determined by the end user.
Storage Buffer	In PBS, 150mM NaCl, pH 7.4 (50% glycerol, 0.02% sodium azide)
Storage Instruction	Store at -20°C. Aliquot to avoid repeated freezing and thawing.
Note	This product contains sodium azide: a POISONOUS AND HAZARDOUS SUBSTANCE which should be handled by trained staff only.

Applications

- Western Blot (Cell lysate)

Western blot analysis of extracts from 293 cells, using PTK2 polyclonal antibody (Cat # PAB18355).

Peptide "+" means "peptide blocking".

- Immunohistochemistry (Formalin/PFA-fixed paraffin-embedded sections)

Immunohistochemical analysis of paraffin-embedded human breast carcinoma tissue using PTK2 polyclonal antibody (Cat # PAB18355).

Peptide "+" means "peptide blocking".

- Immunofluorescence

Immunofluorescence analysis of HeLa cells, using PTK2 polyclonal antibody (Cat # PAB18355).

Peptide "+" means "peptide blocking".

- Enzyme-linked Immunoabsorbent Assay

Gene Info — PTK2

Entrez GeneID [5747](#)

Protein Accession# [Q05397](#)

Gene Name PTK2

Gene Alias FADK, FAK, FAK1, pp125FAK

Gene Description PTK2 protein tyrosine kinase 2

Omim ID [600758](#)

Gene Ontology [Hyperlink](#)

Gene Summary This gene encodes a cytoplasmic protein tyrosine kinase which is found concentrated in the focal adhesions that form between cells growing in the presence of extracellular matrix constituents. The encoded protein is a member of the FAK subfamily of protein tyrosine kinases but lacks significant sequence similarity to kinases from other subfamilies. Activation of this gene may be an important early step in cell growth and intracellular signal transduction pathways triggered in response to certain neural peptides or to cell interactions with the extracellular matrix. At least four transcript variants encoding four different isoforms have been found for this gene, but the full-length nature of only two of them have been determined. [provided by RefSeq]

Other Designations focal adhesion kinase 1

Publication Reference

- [Global, in vivo, and site-specific phosphorylation dynamics in signaling networks.](#)

Olsen JV, Blagoev B, Gnäd F, Macek B, Kumar C, Mortensen P, Mann M.

Cell 2006 Nov; 127(3):635.

Pathway

- [Axon guidance](#)
- [Chemokine signaling pathway](#)
- [ErbB signaling pathway](#)
- [Focal adhesion](#)
- [Leukocyte transendothelial migration](#)

- [Pathways in cancer](#)
- [Regulation of actin cytoskeleton](#)
- [Small cell lung cancer](#)
- [VEGF signaling pathway](#)

Disease

- [Autistic Disorder](#)
- [Genetic Predisposition to Disease](#)
- [HIV Infections](#)
- [Leukemia](#)
- [Mental Retardation](#)
- [Neovascularization](#)
- [Psychotic Disorders](#)
- [Schizophrenia](#)