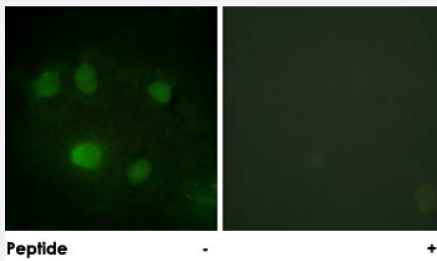


DDX5 polyclonal antibody

Catalog # PAB18341 Size 100 ug

Applications



Immunofluorescence

Immunofluorescence analysis of HeLa cells, using DDX5 polyclonal antibody (Cat # PAB18341).

Peptide "+" means "peptide blocking".

Specification

Product Description Rabbit polyclonal antibody raised against synthetic peptide of DDX5.

Immunogen A synthetic peptide corresponding to human DDX5.

Host Rabbit

Reactivity Human, Mouse, Rat

Specificity This antibody is specific to DDX5.

Form Liquid

Purification Affinity purification

Concentration 1 mg/mL

Recommend Usage Immunofluorescence (1:100-1:500)
ELISA (1:20000)
The optimal working dilution should be determined by the end user.

Storage Buffer In PBS, 150mM NaCl, pH 7.4 (50% glycerol, 0.02% sodium azide)

Storage Instruction

Store at -20°C.
Aliquot to avoid repeated freezing and thawing.

Note

This product contains sodium azide: a POISONOUS AND HAZARDOUS SUBSTANCE which should be handled by trained staff only.

Applications

- Immunofluorescence

Immunofluorescence analysis of HeLa cells, using DDX5 polyclonal antibody (Cat # PAB18341).
Peptide "+" means "peptide blocking".

- Enzyme-linked Immunoabsorbent Assay

Gene Info — DDX5

Entrez GeneID[1655](#)**Protein Accession#**[P17844](#)**Gene Name**

DDX5

Gene Alias

DKFZp434E109, DKFZp686J01190, G17P1, HLR1, HUMP68, p68

Gene Description

DEAD (Asp-Glu-Ala-Asp) box polypeptide 5

Omim ID[180630](#)**Gene Ontology**[Hyperlink](#)**Gene Summary**

DEAD box proteins, characterized by the conserved motif Asp-Glu-Ala-Asp (DEAD), are putative RNA helicases. They are implicated in a number of cellular processes involving alteration of RNA secondary structure, such as translation initiation, nuclear and mitochondrial splicing, and ribosome and spliceosome assembly. Based on their distribution patterns, some members of this family are believed to be involved in embryogenesis, spermatogenesis, and cellular growth and division. This gene encodes a DEAD box protein, which is a RNA-dependent ATPase, and also a proliferation-associated nuclear antigen, specifically reacting with the simian virus 40 tumor antigen. This gene consists of 13 exons, and alternatively spliced transcripts containing several intron sequences have been detected, but no isoforms encoded by these transcripts have been identified. [provided by RefSeq]

Other Designations

ATP-dependent RNA helicase DDX5|DEAD box-5|DEAD/H (Asp-Glu-Ala-Asp/His) box polypeptide 5 (RNA helicase, 68kD)

Publication Reference

- [Global proteomic profiling of phosphopeptides using electron transfer dissociation tandem mass spectrometry.](#)

Molina H, Horn DM, Tang N, Mathivanan S, Pandey A.

PNAS 2007 Feb; 104(7):2199.

- [Structure and expression of the human p68 RNA helicase gene.](#)

Rossler OG, Hloch P, Schutz N, Weitzenegger T, Stahl H.

Nucleic Acids Research 2000 Feb; 28(4):932.

Application: WB, Human, HeLa cells, Human tissues

Disease

- [Disease Progression](#)
- [Genetic Predisposition to Disease](#)
- [Hepatitis C](#)
- [Kidney Failure](#)
- [Liver Cirrhosis](#)