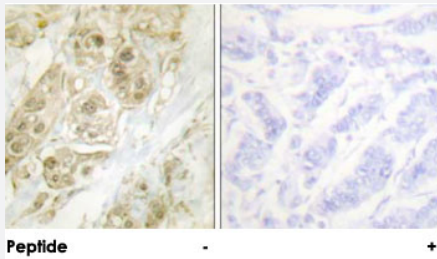


CENPA polyclonal antibody

Catalog # PAB18324 Size 100 ug

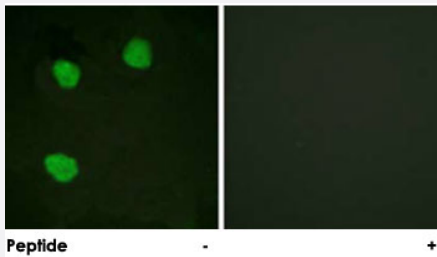
Applications



Immunohistochemistry (Formalin/PFA-fixed paraffin-embedded sections)

Immunohistochemical analysis of paraffin-embedded human breast carcinoma tissue using CENPA polyclonal antibody (Cat # PAB18324).

Peptide "+" means "peptide blocking".



Immunofluorescence

Immunofluorescence analysis of HeLa cells, treated with Forskolin (40 nM, 30 mins), using CENPA polyclonal antibody (Cat # PAB18324).

Peptide "+" means "peptide blocking".

Specification

Product Description	Rabbit polyclonal antibody raised against synthetic peptide of CENPA.
Immunogen	A synthetic peptide corresponding to human CENPA.
Host	Rabbit
Reactivity	Human
Specificity	This antibody is specific to CENPA.
Form	Liquid
Purification	Affinity purification

Concentration	1 mg/mL
Recommend Usage	Immunohistochemistry (1:50-1:100) Immunofluorescence (1:500-1:1000) ELISA (1:10000) The optimal working dilution should be determined by the end user.
Storage Buffer	In PBS, 150mM NaCl, pH 7.4 (50% glycerol, 0.02% sodium azide)
Storage Instruction	Store at -20°C. Aliquot to avoid repeated freezing and thawing.
Note	This product contains sodium azide: a POISONOUS AND HAZARDOUS SUBSTANCE which should be handled by trained staff only.

Applications

- Immunohistochemistry (Formalin/PFA-fixed paraffin-embedded sections)

Immunohistochemical analysis of paraffin-embedded human breast carcinoma tissue using CENPA polyclonal antibody (Cat # PAB18324).

Peptide "+" means "peptide blocking".

- Immunofluorescence

Immunofluorescence analysis of HeLa cells, treated with Forskolin (40 nM, 30 mins), using CENPA polyclonal antibody (Cat # PAB18324).

Peptide "+" means "peptide blocking".

- Enzyme-linked Immunoabsorbent Assay

Gene Info — CENPA

Entrez GeneID	1058
Protein Accession#	P49450
Gene Name	CENPA
Gene Alias	CENP-A
Gene Description	centromere protein A
Omim ID	117139
Gene Ontology	Hyperlink

Gene Summary

Centromeres are the differentiated chromosomal domains that specify the mitotic behavior of chromosomes. CENPA encodes a centromere protein which contains a histone H3 related histone fold domain that is required for targeting to the centromere. CENPA is proposed to be a component of a modified nucleosome or nucleosome-like structure in which it replaces 1 or both copies of conventional histone H3 in the (H3-H4)₂ tetrameric core of the nucleosome particle. Alternative splicing results in multiple transcript variants encoding distinct isoforms. [provided by RefSeq]

Other Designations

OTTHUMP00000122589|centromere protein A, 17kDa

Publication Reference

- [Global, in vivo, and site-specific phosphorylation dynamics in signaling networks.](#)

Olsen JV, Blagoev B, Gnäd F, Macek B, Kumar C, Mortensen P, Mann M.
Cell 2006 Nov; 127(3):635.

- [The human CENP-A centromeric nucleosome-associated complex.](#)

Foltz DR, Jansen LE, Black BE, Bailey AO, Yates JR 3rd, Cleveland DW.
Nature Cell Biology 2006 May; 8(5):458.

Application: IF, Human, HeLa cells

- [Structural determinants for generating centromeric chromatin.](#)

Black BE, Foltz DR, Chakravarthy S, Luger K, Woods VL Jr, Cleveland DW.
Nature 2004 Jul; 430(6999):578.