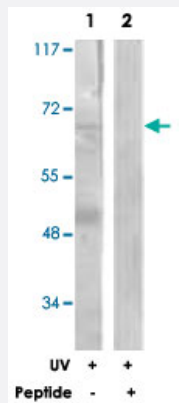


CDC25B polyclonal antibody

Catalog # PAB18322 Size 100 ug

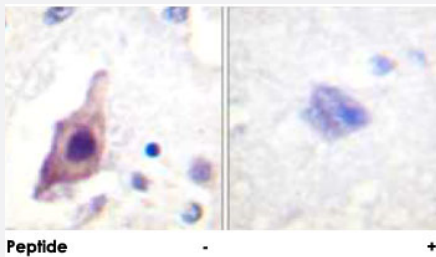
Applications



Western Blot (Cell lysate)

Western blot analysis of extracts from Raw 264.7 cells, treated with UV (15 mins), using CDC25B polyclonal antibody (Cat # PAB18322).

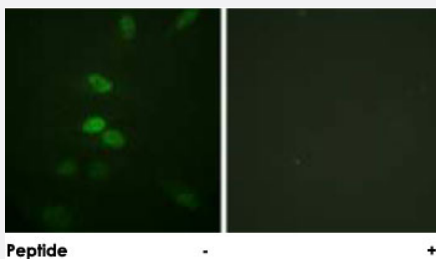
Peptide "+" means "peptide blocking".



Immunohistochemistry (Formalin/PFA-fixed paraffin-embedded sections)

Immunohistochemical analysis of paraffin-embedded human brain tissue using CDC25B polyclonal antibody (Cat # PAB18322).

Peptide "+" means "peptide blocking".



Immunofluorescence

Immunofluorescence analysis of HeLa cells, using CDC25B polyclonal antibody (Cat # PAB18322).

Peptide "+" means "peptide blocking".

Specification

Product Description

Rabbit polyclonal antibody raised against synthetic peptide of CDC25B.

Immunogen	A synthetic peptide corresponding to residues surrounding S353 of human CDC25B.
Host	Rabbit
Reactivity	Human
Specificity	This antibody is specific to CDC25B.
Form	Liquid
Purification	Affinity purification
Concentration	1 mg/mL
Recommend Usage	Western Blot (1:500-1:1000) Immunohistochemistry (1:50-1:100) Immunofluorescence (1:500-1:1000) ELISA (1:5000) The optimal working dilution should be determined by the end user.
Storage Buffer	In PBS, 150mM NaCl, pH 7.4 (50% glycerol, 0.02% sodium azide)
Storage Instruction	Store at -20°C. Aliquot to avoid repeated freezing and thawing.
Note	This product contains sodium azide: a POISONOUS AND HAZARDOUS SUBSTANCE which should be handled by trained staff only.

Applications

- Western Blot (Cell lysate)

Western blot analysis of extracts from Raw 264.7 cells, treated with UV (15 mins), using CDC25B polyclonal antibody (Cat # PAB18322).

Peptide "+" means "peptide blocking".

- Immunohistochemistry (Formalin/PFA-fixed paraffin-embedded sections)

Immunohistochemical analysis of paraffin-embedded human brain tissue using CDC25B polyclonal antibody (Cat # PAB18322).

Peptide "+" means "peptide blocking".

- Immunofluorescence

Immunofluorescence analysis of HeLa cells, using CDC25B polyclonal antibody (Cat # PAB18322).

Peptide "+" means "peptide blocking".

- Enzyme-linked Immunoabsorbent Assay

Gene Info — CDC25B

Entrez GeneID	994
Protein Accession#	P30305
Gene Name	CDC25B
Gene Alias	-
Gene Description	cell division cycle 25 homolog B (S. pombe)
Omim ID	116949
Gene Ontology	Hyperlink
Gene Summary	CDC25B is a member of the CDC25 family of phosphatases. CDC25B activates the cyclin dependent kinase CDC2 by removing two phosphate groups and it is required for entry into mitosis. CDC25B shuttles between the nucleus and the cytoplasm due to nuclear localization and nuclear export signals. The protein is nuclear in the M and G1 phases of the cell cycle and moves to the cytoplasm during S and G2. CDC25B has oncogenic properties, although its role in tumor formation has not been determined. Multiple transcript variants for this gene exist. [provided by RefSeq]
Other Designations	OTTHUMP00000030137 OTTHUMP00000030138 OTTHUMP00000030139 cell division cycle 25B

Publication Reference

- [Cdc25B cooperates with Cdc25A to induce mitosis but has a unique role in activating cyclin B1-Cdk1 at the centrosome.](#)

Lindqvist A, Kallstrom H, Lundgren A, Barsoum E, Rosenthal CK.

Journal of Cell Biology 2005 Oct; 171(1):35.

- [Binding of 14-3-3beta but not 14-3-3sigma controls the cytoplasmic localization of CDC25B: binding site preferences of 14-3-3 subtypes and the subcellular localization of CDC25B.](#)

Uchida S, Kuma A, Ohtsubo M, Shimura M, Hirata M, Nakagama H, Matsunaga T, Ishizaka Y, Yamashita K.

Journal of Cell Science 2004 Jun; 117(Pt 14):3011.

Pathway

- [Cell cycle](#)
- [MAPK signaling pathway](#)

Disease

- [Bipolar Disorder](#)
- [Genetic Predisposition to Disease](#)
- [Lung Neoplasms](#)
- [Ovarian Neoplasms](#)
- [Pulmonary Disease](#)
- [Urinary Bladder Neoplasms](#)
- [Werner syndrome](#)