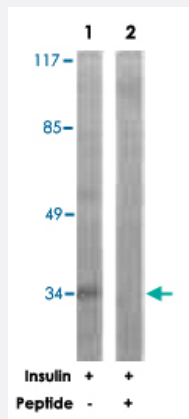


CEBPE polyclonal antibody

Catalog # PAB18310

Size 100 ug

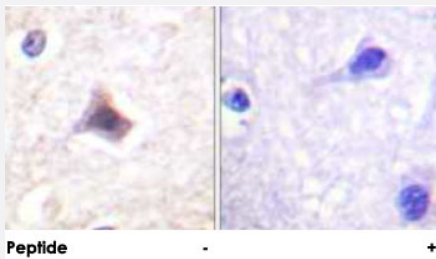
Applications



Western Blot (Cell lysate)

Western blot analysis of extracts from HUVEC cells, treated with Insulin (0.01 U/ml, 15 mins), using CEBPE polyclonal antibody (Cat # PAB18310).

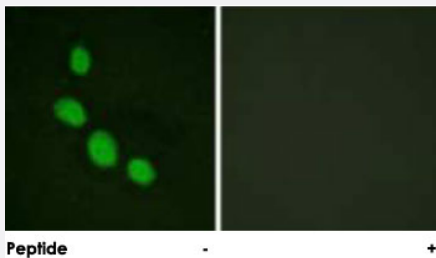
Peptide "+" means "peptide blocking".



Immunohistochemistry (Formalin/PFA-fixed paraffin-embedded sections)

Immunohistochemical analysis of paraffin-embedded human brain tissue using CEBPE polyclonal antibody (Cat # PAB18310).

Peptide "+" means "peptide blocking".



Immunofluorescence

Immunofluorescence analysis of HeLa cells, using CEBPE polyclonal antibody (Cat # PAB18310).

Peptide "+" means "peptide blocking".

Specification

Product Description

Rabbit polyclonal antibody raised against synthetic peptide of CEBPE.

Immunogen	A synthetic peptide corresponding to residues surrounding T74 of human CEBPE.
Host	Rabbit
Reactivity	Human
Specificity	This antibody is specific to CEBPE.
Form	Liquid
Purification	Affinity purification
Concentration	1 mg/mL
Recommend Usage	Western Blot (1:500-1:1000) Immunohistochemistry (1:50-1:100) Immunofluorescence (1:500-1:1000) ELISA (1:5000) The optimal working dilution should be determined by the end user.
Storage Buffer	In PBS, 150mM NaCl, pH 7.4 (50% glycerol, 0.02% sodium azide)
Storage Instruction	Store at -20°C. Aliquot to avoid repeated freezing and thawing.
Note	This product contains sodium azide: a POISONOUS AND HAZARDOUS SUBSTANCE which should be handled by trained staff only.

Applications

- Western Blot (Cell lysate)

Western blot analysis of extracts from HUVEC cells, treated with Insulin (0.01 U /ml, 15 mins), using CEBPE polyclonal antibody (Cat # PAB18310).

Peptide "+" means "peptide blocking".

- Immunohistochemistry (Formalin/PFA-fixed paraffin-embedded sections)

Immunohistochemical analysis of paraffin-embedded human brain tissue using CEBPE polyclonal antibody (Cat # PAB18310).

Peptide "+" means "peptide blocking".

- Immunofluorescence

Immunofluorescence analysis of HeLa cells, using CEBPE polyclonal antibody (Cat # PAB18310).

Peptide "+" means "peptide blocking".

- Enzyme-linked Immunoabsorbent Assay

Gene Info — CEBPE

Entrez GeneID [1053](#)

Protein Accession# [Q15744](#)

Gene Name CEBPE

Gene Alias C/EBP-epsilon, CRP1

Gene Description CCAAT/enhancer binding protein (C/EBP), epsilon

Omim ID [245480 600749](#)

Gene Ontology [Hyperlink](#)

Gene Summary The protein encoded by this gene is a bZIP transcription factor which can bind as a homodimer to certain DNA regulatory regions. It can also form heterodimers with the related protein CEBP-delta . The encoded protein may be essential for terminal differentiation and functional maturation of committed granulocyte progenitor cells. Mutations in this gene have been associated with Specific Granule Deficiency, a rare congenital disorder. Multiple variants of this gene have been described , but the full-length nature of only one has been determined. [provided by RefSeq

Other Designations CCAAT/enhancer binding protein epsilon

Publication Reference

- [Increased CCAAT enhancer-binding protein epsilon \(C/EBPepsilon\) expression and premature apoptosis in myeloid cells expressing Gfi-1 N382S mutant associated with severe congenital neutropenia.](#)

Zhuang D, Qiu Y, Kogan SC, Dong F.

The Journal of Biological Chemistry 2006 Apr; 281(16):10745.

Application: WB-Tr, Mouse, 32D, 32D-Gfi-1, 32D-N382S, 32D-CEBPE, L-G, L-G-N382S cells

- [C/EBP epsilon mediates myeloid differentiation and is regulated by the CCAAT displacement protein \(CDP/cut\).](#)

Khanna-Gupta A, Zibello T, Sun H, Lekstrom-Himes J, Berliner N.

Proceedings of the National Academy of Sciences of the United States of America 2001 Jul; 98(14):8000.

- [The role of C/EBP\(epsilon\) in the terminal stages of granulocyte differentiation.](#)

Lekstrom-Himes JA.

Stem Cells 2001 Jan; 19(2):125.

Disease

- [Genetic Predisposition to Disease](#)
- [Precursor B-Cell Lymphoblastic Leukemia-Lymphoma](#)