

PRKCD polyclonal antibody

Catalog # PAB18258 Size 100 ug

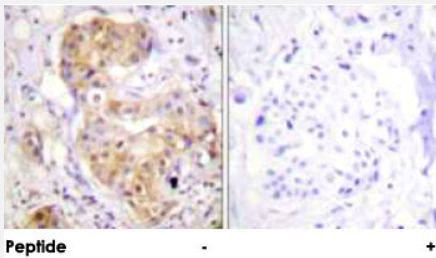
Applications



Western Blot (Cell lysate)

Western blot analysis of extracts from NIH/3T3 cells, treated with UV (15 mins), using PRKCD polyclonal antibody (Cat # PAB18258).

Peptide "+" means "peptide blocking".



Immunohistochemistry (Formalin/PFA-fixed paraffin-embedded sections)

Immunohistochemical analysis of paraffin-embedded human breast carcinoma tissue using PRKCD polyclonal antibody (Cat # PAB18258).

Peptide "+" means "peptide blocking".

Specification

Product Description	Rabbit polyclonal antibody raised against synthetic peptide of PRKCD.
Immunogen	A synthetic peptide corresponding to residues surrounding T505 of human PRKCD.
Host	Rabbit
Reactivity	Human, Mouse, Rat
Specificity	This antibody is specific to PRKCD.
Form	Liquid

Purification	Affinity purification
Concentration	1 mg/mL
Recommend Usage	Western Blot (1:500-1:1000) Immunohistochemistry (1:50-1:100) ELISA (1:5000) The optimal working dilution should be determined by the end user.
Storage Buffer	In PBS, 150mM NaCl, pH 7.4 (50% glycerol, 0.02% sodium azide)
Storage Instruction	Store at -20°C. Aliquot to avoid repeated freezing and thawing.
Note	This product contains sodium azide: a POISONOUS AND HAZARDOUS SUBSTANCE which should be handled by trained staff only.

Applications

- Western Blot (Cell lysate)

Western blot analysis of extracts from NIH/3T3 cells, treated with UV (15 mins), using PRKCD polyclonal antibody (Cat # PAB18258).

Peptide "+" means "peptide blocking".

- Immunohistochemistry (Formalin/PFA-fixed paraffin-embedded sections)

Immunohistochemical analysis of paraffin-embedded human breast carcinoma tissue using PRKCD polyclonal antibody (Cat # PAB18258).

Peptide "+" means "peptide blocking".

- Enzyme-linked Immunoabsorbent Assay

Gene Info — PRKCD

Entrez GeneID	5580
Protein Accession#	Q05655
Gene Name	PRKCD
Gene Alias	MAY1, MGC49908, PKCD, nPKC-delta
Gene Description	protein kinase C, delta
Omim ID	176977

Gene Ontology

[Hyperlink](#)

Gene Summary

Protein kinase C (PKC) is a family of serine- and threonine-specific protein kinases that can be activated by calcium and the second messenger diacylglycerol. PKC family members phosphorylate a wide variety of protein targets and are known to be involved in diverse cellular signaling pathways. PKC family members also serve as major receptors for phorbol esters, a class of tumor promoters. Each member of the PKC family has a specific expression profile and is believed to play distinct roles in cells. The protein encoded by this gene is one of the PKC family members. Studies both in human and mice demonstrate that this kinase is involved in B cell signaling and in the regulation of growth, apoptosis, and differentiation of a variety of cell types. Alternatively spliced transcript variants encoding the same protein have been observed. [provided by RefSeq]

Other Designations

protein kinase C delta VIII

Publication Reference

- [PEP005, a selective small-molecule activator of protein kinase C, has potent antileukemic activity mediated via the delta isoform of PKC.](#)

Hampson P, Chahal H, Khanim F, Hayden R, Mulder A, Assi LK, Bunce CM, Lord JM.

Blood 2005 Aug; 106(4):1362.

- [The second phase activation of protein kinase C delta at late G1 is required for DNA synthesis in serum-induced cell cycle progression.](#)

Kitamura K, Mizuno K, Etoh A, Akita Y, Miyamoto A, Nakayama K, Ohno S.

Genes to Cells 2003 Apr; 8(4):311.

Application: WB, WB-Tr, Rat, 3Y1, 3Y1-Kn-DR144/145A, 3Y1-D299-653, 3Y1-T505A cells

- [Basic fibroblast growth factor maintains calcium homeostasis and granulosa cell viability by stimulating calcium efflux via a PKC delta-dependent pathway.](#)

Peluso JJ, Pappalardo A, Fernandez G.

Endocrinology 2001 Oct; 142(10):4203.

Application: WB-Ce, Rat, Rat granulosa cells

Pathway

- [Chemokine signaling pathway](#)
- [Fc epsilon RI signaling pathway](#)
- [Fc gamma R-mediated phagocytosis](#)
- [GnRH signaling pathway](#)

- [Neurotrophin signaling pathway](#)
- [Tight junction](#)
- [Type II diabetes mellitus](#)
- [Vascular smooth muscle contraction](#)

Disease

- [Cardiovascular Diseases](#)
- [Diabetes Mellitus](#)
- [Edema](#)
- [Genetic Predisposition to Disease](#)
- [Tobacco Use Disorder](#)