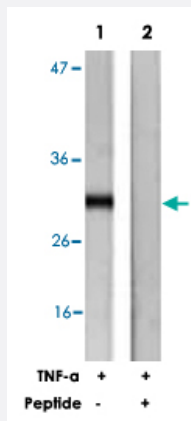


# RPS6 polyclonal antibody

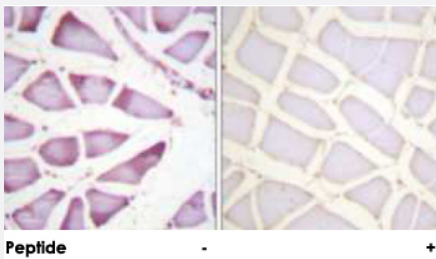
Catalog # PAB18219      Size 100 ug

## Applications



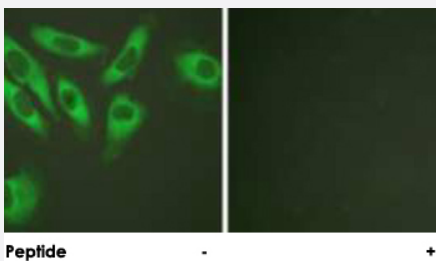
### Western Blot (Cell lysate)

Western blot analysis of extracts from HeLa cells, treated with TNF-α (20 ng/mL, 2 mins), using RPS6 polyclonal antibody (Cat # PAB18219). Peptide "+" means "peptide blocking".



### Immunohistochemistry (Formalin/PFA-fixed paraffin-embedded sections)

Immunohistochemical analysis of paraffin-embedded human skeletal muscle tissue using RPS6 polyclonal antibody (Cat # PAB18219). Peptide "+" means "peptide blocking".



### Immunofluorescence

Immunofluorescence analysis of HeLa cells, using RPS6 polyclonal antibody (Cat # PAB18219). Peptide "+" means "peptide blocking".

## Specification

### Product Description

Rabbit polyclonal antibody raised against synthetic peptide of RPS6.

<b>Immunogen</b>	A synthetic peptide corresponding to residues surrounding S240 of human RPS6.
<b>Host</b>	Rabbit
<b>Reactivity</b>	Human, Mouse, Rat
<b>Specificity</b>	This antibody is specific to RPS6.
<b>Form</b>	Liquid
<b>Purification</b>	Affinity purification
<b>Concentration</b>	1 mg/mL
<b>Recommend Usage</b>	Western Blot (1:500-1:1000) Immunohistochemistry (1:50-1:100) Immunofluorescence (1:500-1:1000) ELISA (1:10000) The optimal working dilution should be determined by the end user.
<b>Storage Buffer</b>	In PBS, 150mM NaCl, pH 7.4 (50% glycerol, 0.02% sodium azide)
<b>Storage Instruction</b>	Store at -20°C. Aliquot to avoid repeated freezing and thawing.
<b>Note</b>	This product contains sodium azide: a POISONOUS AND HAZARDOUS SUBSTANCE which should be handled by trained staff only.

## Applications

- Western Blot (Cell lysate)

Western blot analysis of extracts from HeLa cells, treated with TNF- $\alpha$  (20 ng/mL, 2 mins), using RPS6 polyclonal antibody (Cat # PAB18219).

Peptide "+" means "peptide blocking".

- Immunohistochemistry (Formalin/PFA-fixed paraffin-embedded sections)

Immunohistochemical analysis of paraffin-embedded human skeletal muscle tissue using RPS6 polyclonal antibody (Cat # PAB18219).

Peptide "+" means "peptide blocking".

- Immunofluorescence

Immunofluorescence analysis of HeLa cells, using RPS6 polyclonal antibody (Cat # PAB18219).

Peptide "+" means "peptide blocking".

- Enzyme-linked Immunoabsorbent Assay

## Gene Info — RPS6

Entrez GeneID [6194](#)

Protein Accession# [P62753](#)

Gene Name RPS6

Gene Alias -

Gene Description ribosomal protein S6

Omim ID [180460](#)

Gene Ontology [Hyperlink](#)

**Gene Summary**

Ribosomes, the organelles that catalyze protein synthesis, consist of a small 40S subunit and a large 60S subunit. Together these subunits are composed of 4 RNA species and approximately 80 structurally distinct proteins. This gene encodes a cytoplasmic ribosomal protein that is a component of the 40S subunit. The protein belongs to the S6E family of ribosomal proteins. It is the major substrate of protein kinases in the ribosome, with subsets of five C-terminal serine residues phosphorylated by different protein kinases. Phosphorylation is induced by a wide range of stimuli, including growth factors, tumor-promoting agents, and mitogens. Dephosphorylation occurs at growth arrest. The protein may contribute to the control of cell growth and proliferation through the selective translation of particular classes of mRNA. As is typical for genes encoding ribosomal proteins, there are multiple processed pseudogenes of this gene dispersed through the genome. [provided by RefSeq]

**Other Designations** 40S ribosomal protein S6|OTTHUMP00000021120|phosphoprotein NP33

## Publication Reference

- [S6 kinase 2 potentiates interleukin-3-driven cell proliferation.](#)

Cruz R, Hedden L, Boyer D, Kharas MG, Fruman DA, Lee-Fruman KK.

Journal of Leukocyte Biology 2005 Dec; 78(6):1378.

## Pathway

- [Insulin signaling pathway](#)
- [mTOR signaling pathway](#)
- [Ribosome](#)