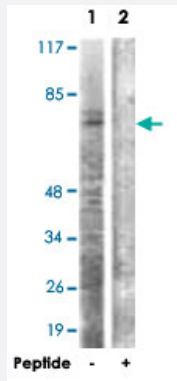


# CDC6 polyclonal antibody

Catalog # PAB18146      Size 100 ug

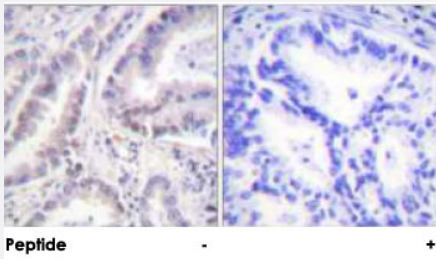
## Applications



### Western Blot (Cell lysate)

Western blot analysis of extracts from HT-29 cells, using CDC6 polyclonal antibody (Cat # PAB18146).

Peptide "+" means "peptide blocking".



### Immunohistochemistry (Formalin/PFA-fixed paraffin-embedded sections)

Immunohistochemical analysis of paraffin-embedded human lung carcinoma tissue using CDC6 polyclonal antibody (Cat # PAB18146).

Peptide "+" means "peptide blocking".

## Specification

Product Description	Rabbit polyclonal antibody raised against synthetic peptide of CDC6.
Immunogen	A synthetic peptide corresponding to human CDC6.
Host	Rabbit
Reactivity	Human, Mouse
Specificity	This antibody is specific to CDC6.
Form	Liquid

Purification	Affinity purification
Concentration	1 mg/mL
Recommend Usage	Western Blot (1:500-1:1000) Immunohistochemistry (1:50-1:100) ELISA (1:5000) The optimal working dilution should be determined by the end user.
Storage Buffer	In PBS, 150mM NaCl, pH 7.4 (50% glycerol, 0.02% sodium azide)
Storage Instruction	Store at -20°C. Aliquot to avoid repeated freezing and thawing.
Note	This product contains sodium azide: a POISONOUS AND HAZARDOUS SUBSTANCE which should be handled by trained staff only.

## Applications

- Western Blot (Cell lysate)

Western blot analysis of extracts from HT-29 cells, using CDC6 polyclonal antibody (Cat # PAB18146).  
Peptide "+" means "peptide blocking".

- Immunohistochemistry (Formalin/PFA-fixed paraffin-embedded sections)

Immunohistochemical analysis of paraffin-embedded human lung carcinoma tissue using CDC6 polyclonal antibody (Cat # PAB18146).  
Peptide "+" means "peptide blocking".

- Enzyme-linked Immunoabsorbent Assay

## Gene Info — CDC6

Entrez GeneID	<a href="#">990</a>
Protein Accession#	<a href="#">Q99741</a>
Gene Name	CDC6
Gene Alias	CDC18L, HsCDC18, HsCDC6
Gene Description	cell division cycle 6 homolog (S. cerevisiae)
Omim ID	<a href="#">602627</a>
Gene Ontology	<a href="#">Hyperlink</a>

**Gene Summary**

The protein encoded by this gene is highly similar to *Saccharomyces cerevisiae* Cdc6, a protein essential for the initiation of DNA replication. This protein functions as a regulator at the early step of DNA replication. It localizes in cell nucleus during cell cycle G1, but translocates to the cytoplasm at the start of S phase. The subcellular translocation of this protein during cell cycle is regulated through its phosphorylation by Cdks. Transcription of this protein was reported to be regulated in response to mitogenic signals through transcriptional control mechanism involving E2F proteins. [provided by RefSeq]

**Other Designations**

CDC18 (cell division cycle 18, *S.pombe*, homolog)-like|CDC6 cell division cycle 6 homolog|CDC6-related protein|cell division cycle 6 protein

**Publication Reference**

- [Cdc6 stability is regulated by the Huwe1 ubiquitin ligase after DNA damage.](#)

Hall JR, Kow E, Nevis KR, Lu CK, Luce KS, Zhong Q, Cook JG.

Molecular Biology of the Cell 2007 Sep; 18(9):3340.

- [Identification and characterization of \*Saccharomyces cerevisiae\* Cdc6 DNA-binding properties.](#)

Feng L, Wang B, Driscoll B, Jong A.

Molecular Biology of the Cell 2000 May; 11(5):1673.

- [The stability of the Cdc6 protein is regulated by cyclin-dependent kinase/cyclin B complexes in \*Saccharomyces cerevisiae\*.](#)

Calzada A, Sanchez M, Sanchez E, Bueno A.

The Journal of Biological Chemistry 2000 Mar; 275(13):9734.

Application: WB-Ce, WB-Re, Yeast, Recombinant protein, Yeast cells

**Pathway**

- [Cell cycle](#)

**Disease**

- [Carcinoma](#)
- [Genetic Predisposition to Disease](#)
- [Kidney Failure](#)

- [Liver Neoplasms](#)
- [Lymphoma](#)
- [Pulmonary Disease](#)
- [Uterine Cervical Neoplasms](#)