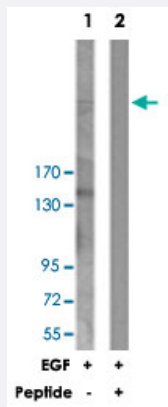


ESPL1 polyclonal antibody

Catalog # PAB18135 Size 100 ug

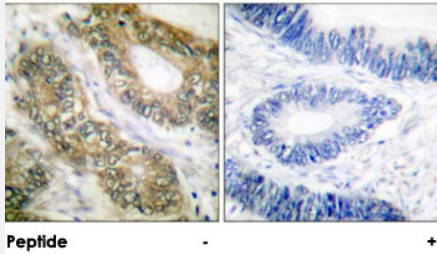
Applications



Western Blot (Cell lysate)

Western blot analysis of extracts from 293 cells, treated with EGF (200 ng/mL, 30 mins), using ESPL1 polyclonal antibody (Cat # PAB18135).

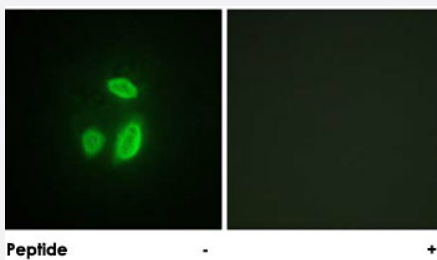
Peptide "+" means "peptide blocking".



Immunohistochemistry (Formalin/PFA-fixed paraffin-embedded sections)

Immunohistochemical analysis of paraffin-embedded human colon carcinoma tissue using ESPL1 polyclonal antibody (Cat # PAB18135).

Peptide "+" means "peptide blocking".



Immunofluorescence

Immunofluorescence analysis of HUVEC cells, using ESPL1 polyclonal antibody (Cat # PAB18135).

Peptide "+" means "peptide blocking".

Specification

Product Description

Rabbit polyclonal antibody raised against synthetic peptide of ESPL1.

Immunogen	A synthetic peptide corresponding to human ESPL1.
Host	Rabbit
Reactivity	Human, Mouse
Specificity	This antibody is specific to ESPL1.
Form	Liquid
Purification	Affinity purification
Concentration	1 mg/mL
Recommend Usage	Western Blot (1:500-1:1000) Immunohistochemistry (1:50-1:100) Immunofluorescence (1:500-1:1000) ELISA (1:40000) The optimal working dilution should be determined by the end user.
Storage Buffer	In PBS, 150mM NaCl, pH 7.4 (50% glycerol, 0.02% sodium azide)
Storage Instruction	Store at -20°C. Aliquot to avoid repeated freezing and thawing.
Note	This product contains sodium azide: a POISONOUS AND HAZARDOUS SUBSTANCE which should be handled by trained staff only.

Applications

- Western Blot (Cell lysate)

Western blot analysis of extracts from 293 cells, treated with EGF (200 ng/mL, 30 mins), using ESPL1 polyclonal antibody (Cat # PAB18135).

Peptide "+" means "peptide blocking".

- Immunohistochemistry (Formalin/PFA-fixed paraffin-embedded sections)

Immunohistochemical analysis of paraffin-embedded human colon carcinoma tissue using ESPL1 polyclonal antibody (Cat # PAB18135).

Peptide "+" means "peptide blocking".

- Immunofluorescence

Immunofluorescence analysis of HUVEC cells, using ESPL1 polyclonal antibody (Cat # PAB18135).

Peptide "+" means "peptide blocking".

- Enzyme-linked Immunoabsorbent Assay

Gene Info — ESPL1

Entrez GeneID [9700](#)

Protein Accession# [Q14674](#)

Gene Name ESPL1

Gene Alias ESP1, FLJ46492, KIAA0165, SEPARASE, SEPARIN

Gene Description extra spindle pole bodies homolog 1 (S. cerevisiae)

Omim ID [604143](#)

Gene Ontology [Hyperlink](#)

Gene Summary Stable cohesion between sister chromatids before anaphase and their timely separation during a naphase are critical for chromosome inheritance. In vertebrates, sister chromatid cohesion is rele used in 2 steps via distinct mechanisms. The first step involves phosphorylation of STAG1 (MIM 6 04358) or STAG2 (MIM 604359) in the cohesin complex. The second step involves cleavage of th e cohesin subunit SCC1 (RAD21; MIM 606462) by ESPL1, or separase, which initiates the final s eparation of sister chromatids (Sun et al., 2009 [PubMed 19345191]).[supplied by OMIM

Other Designations extra spindle poles like 1|separin, separase

Publication Reference

- [Regulation of human separase by securin binding and autocleavage.](#)

Waizenegger I, Gimenez-Abian JF, Wernic D, Peters JM.

Current Biology 2002 Aug; 12(16):1368.

Application: IP, WB-Tr, Human, HeLa cells

Pathway

- [Cell cycle](#)

Disease

- [Breast cancer](#)
- [Breast Neoplasms](#)
- [Chromosomal Instability](#)

- [Genetic Predisposition to Disease](#)