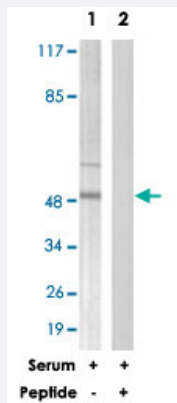


CCNB1 polyclonal antibody

Catalog # PAB18121

Size 100 ug

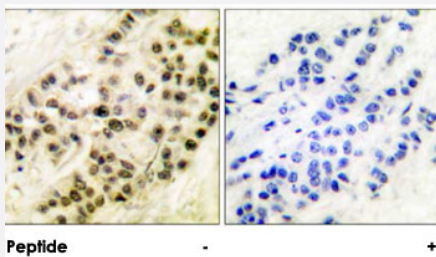
Applications



Western Blot (Cell lysate)

Western blot analysis of extracts from HeLa cells, treated with serum (10 %, 15 min), using CCNB1 polyclonal antibody (Cat # PAB18121).

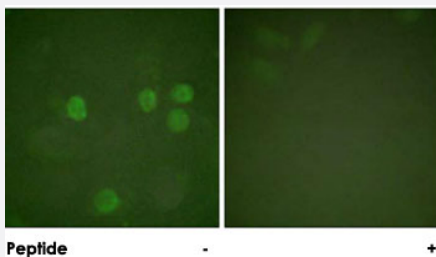
Peptide "+" means "peptide blocking".



Immunohistochemistry (Formalin/PFA-fixed paraffin-embedded sections)

Immunohistochemical analysis of paraffin-embedded human breast carcinoma tissue using CCNB1 polyclonal antibody (Cat # PAB18121).

Peptide "+" means "peptide blocking".



Immunofluorescence

Immunofluorescence analysis of HeLa cells, treated with Forskolin (40 nM, 30 mins), using CCNB1 polyclonal antibody (Cat # PAB18121).

Peptide "+" means "peptide blocking".

Specification

Product Description

Rabbit polyclonal antibody raised against synthetic peptide of CCNB1.

Immunogen	A synthetic peptide corresponding to human CCNB1.
Host	Rabbit
Reactivity	Human, Mouse, Rat
Specificity	This antibody is specific to CCNB1.
Form	Liquid
Purification	Affinity purification
Concentration	1 mg/mL
Recommend Usage	Western Blot (1:500-1:1000) Immunohistochemistry (1:50-1:100) Immunofluorescence (1:500-1:1000) ELISA (1:20000) The optimal working dilution should be determined by the end user.
Storage Buffer	In PBS, 150mM NaCl, pH 7.4 (50% glycerol, 0.02% sodium azide)
Storage Instruction	Store at -20°C. Aliquot to avoid repeated freezing and thawing.
Note	This product contains sodium azide: a POISONOUS AND HAZARDOUS SUBSTANCE which should be handled by trained staff only.

Applications

- Western Blot (Cell lysate)

Western blot analysis of extracts from HeLa cells, treated with serum (10 %, 15 min), using CCNB1 polyclonal antibody (Cat # PAB18121).

Peptide "+" means "peptide blocking".

- Immunohistochemistry (Formalin/PFA-fixed paraffin-embedded sections)

Immunohistochemical analysis of paraffin-embedded human breast carcinoma tissue using CCNB1 polyclonal antibody (Cat # PAB18121).

Peptide "+" means "peptide blocking".

- Immunofluorescence

Immunofluorescence analysis of HeLa cells, treated with Forskolin (40 nM, 30 mins), using CCNB1 polyclonal antibody (Cat # PAB18121).

Peptide "+" means "peptide blocking".

- Enzyme-linked Immunoabsorbent Assay

Gene Info — CCNB1

Entrez GeneID [891](#)

Protein Accession# [P14635](#)

Gene Name CCNB1

Gene Alias CCNB

Gene Description cyclin B1

Omim ID [123836](#)

Gene Ontology [Hyperlink](#)

Gene Summary The protein encoded by this gene is a regulatory protein involved in mitosis. The gene product co complexes with p34(cdc2) to form the maturation-promoting factor (MPF). Two alternative transcript s have been found, a constitutively expressed transcript and a cell cycle-regulated transcript, that i s expressed predominantly during G2/M phase. The different transcripts result from the use of alte mate transcription initiation sites. [provided by RefSeq]

Other Designations G2/mitotic-specific cyclin B1

Publication Reference

- [Phosphorylation of the cyclin b1 cytoplasmic retention sequence by mitogen-activated protein kinase and Plx.](#)

Walsh S, Margolis SS, Kornbluth S.

Molecular Cancer Research 2003 Feb; 1(4):280.

- [Combinatorial control of cyclin B1 nuclear trafficking through phosphorylation at multiple sites.](#)

Yang J, Song H, Walsh S, Bardes ES, Kornbluth S.

The Journal of Biological Chemistry 2001 Feb; 276(5):3604.

Pathway

- [Cell cycle](#)
- [p53 signaling pathway](#)

Disease

- [Adenocarcinoma](#)
- [Esophageal Neoplasms](#)
- [Genetic Predisposition to Disease](#)
- [Ovarian Neoplasms](#)