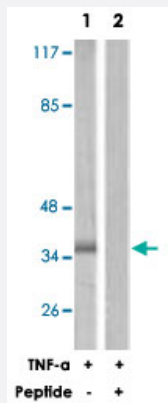


CRKL polyclonal antibody

Catalog # PAB18120

Size 100 ug

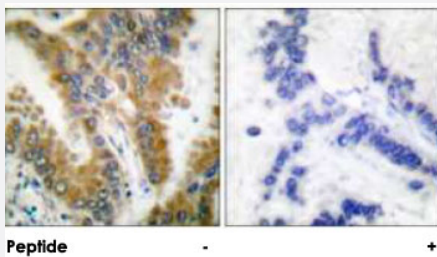
Applications



Western Blot (Cell lysate)

Western blot analysis of extracts from 293 cells, using CRKL polyclonal antibody (Cat # PAB18120).

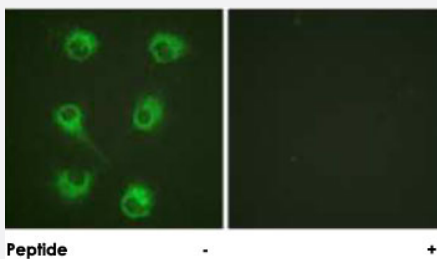
Peptide "+" means "peptide blocking".



Immunohistochemistry (Formalin/PFA-fixed paraffin-embedded sections)

Immunohistochemical analysis of paraffin-embedded human lung carcinoma tissue, using CRKL polyclonal antibody (Cat # PAB18120).

Peptide "+" means "peptide blocking".



Immunofluorescence

Immunofluorescence analysis of HUVEC cells, using CRKL polyclonal antibody (Cat # PAB18120).

Peptide "+" means "peptide blocking".

Specification

Product Description

Rabbit polyclonal antibody raised against synthetic peptide of CRKL.

Immunogen	A synthetic peptide corresponding to human CRKL.
Host	Rabbit
Specificity	This antibody is specific to CRKL.
Form	Liquid
Purification	Affinity purification
Concentration	1 mg/mL
Recommend Usage	Western Blot (1:500-1:1000) Immunohistochemistry (1:50-1:100) Immunofluorescence (1:500-1:1000) ELISA (1:10000) The optimal working dilution should be determined by the end user.
Storage Buffer	In PBS, 150mM NaCl, pH 7.4 (50% glycerol, 0.02% sodium azide)
Storage Instruction	Store at -20°C. Aliquot to avoid repeated freezing and thawing.
Note	This product contains sodium azide: a POISONOUS AND HAZARDOUS SUBSTANCE which should be handled by trained staff only.

Applications

- Western Blot (Cell lysate)

Western blot analysis of extracts from 293 cells, using CRKL polyclonal antibody (Cat # PAB18120).
Peptide "+" means "peptide blocking".

- Immunohistochemistry (Formalin/PFA-fixed paraffin-embedded sections)

Immunohistochemical analysis of paraffin-embedded human lung carcinoma tissue, using CRKL polyclonal antibody (Cat # PAB18120).
Peptide "+" means "peptide blocking".

- Immunofluorescence

Immunofluorescence analysis of HUVEC cells, using CRKL polyclonal antibody (Cat # PAB18120).
Peptide "+" means "peptide blocking".

- Enzyme-linked Immunoabsorbent Assay

Gene Info — CRKL

Entrez GeneID	1399
Protein Accession#	P46109
Gene Name	CRKL
Gene Alias	-
Gene Description	v-crk sarcoma virus CT10 oncogene homolog (avian)-like
Omim ID	602007
Gene Ontology	Hyperlink
Gene Summary	This gene encodes a protein kinase containing SH2 and SH3 (src homology) domains which has been shown to activate the RAS and JUN kinase signaling pathways and transform fibroblasts in a RAS-dependent fashion. It is a substrate of the BCR-ABL tyrosine kinase, plays a role in fibroblast transformation by BCR-ABL, and may be oncogenic
Other Designations	v-crk avian sarcoma virus CT10 oncogene homolog-like

Pathway

- [Chemokine signaling pathway](#)
- [Chronic myeloid leukemia](#)
- [ErbB signaling pathway](#)
- [Fc gamma R-mediated phagocytosis](#)
- [Focal adhesion](#)
- [Insulin signaling pathway](#)
- [MAPK signaling pathway](#)
- [Neurotrophin signaling pathway](#)
- [Pathways in cancer](#)
- [Regulation of actin cytoskeleton](#)
- [Renal cell carcinoma](#)

Disease

- [Cardiovascular Diseases](#)
- [Diabetes Mellitus](#)
- [Edema](#)