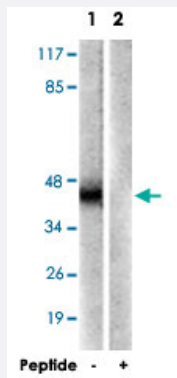


CRK polyclonal antibody

Catalog # PAB18119 Size 100 ug

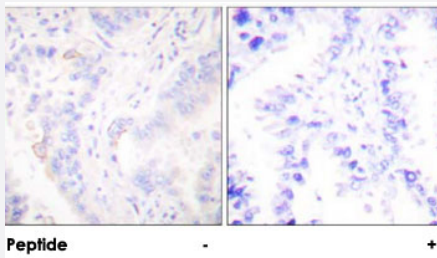
Applications



Western Blot (Cell lysate)

Western blot analysis of extracts from COS-7 cells, using CRK polyclonal antibody (Cat # PAB18119).

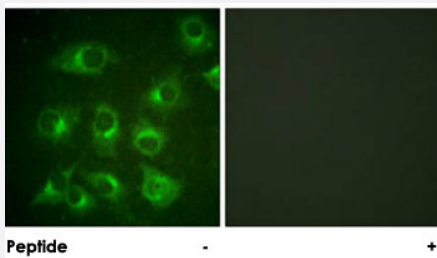
Peptide "+" means "peptide blocking".



Immunohistochemistry (Formalin/PFA-fixed paraffin-embedded sections)

Immunohistochemical analysis of paraffin-embedded human lung carcinoma tissue using CRK polyclonal antibody (Cat # PAB18119).

Peptide "+" means "peptide blocking".



Immunofluorescence

Immunofluorescence analysis of HUVEC cells, using CRK polyclonal antibody (Cat # PAB18119).

Peptide "+" means "peptide blocking".

Specification

Product Description

Rabbit polyclonal antibody raised against synthetic peptide of CRK.

Immunogen	A synthetic peptide corresponding to human CRK.
Host	Rabbit
Reactivity	Human, Mouse, Rat
Specificity	This antibody is specific to CRK.
Form	Liquid
Purification	Affinity purification
Concentration	1 mg/mL
Recommend Usage	Western Blot (1:500-1:1000) Immunohistochemistry (1:50-1:100) Immunofluorescence (1:500-1:1000) ELISA (1:10000) The optimal working dilution should be determined by the end user.
Storage Buffer	In PBS, 150mM NaCl, pH 7.4 (50% glycerol, 0.02% sodium azide)
Storage Instruction	Store at -20°C. Aliquot to avoid repeated freezing and thawing.
Note	This product contains sodium azide: a POISONOUS AND HAZARDOUS SUBSTANCE which should be handled by trained staff only.

Applications

- Western Blot (Cell lysate)

Western blot analysis of extracts from COS-7 cells, using CRK polyclonal antibody (Cat # PAB18119).

Peptide "+" means "peptide blocking".

- Immunohistochemistry (Formalin/PFA-fixed paraffin-embedded sections)

Immunohistochemical analysis of paraffin-embedded human lung carcinoma tissue using CRK polyclonal antibody (Cat # PAB18119).

Peptide "+" means "peptide blocking".

- Immunofluorescence

Immunofluorescence analysis of HUVEC cells, using CRK polyclonal antibody (Cat # PAB18119).

Peptide "+" means "peptide blocking".

- Enzyme-linked Immunoabsorbent Assay

Gene Info — CRK

Entrez GeneID [1398](#)

Protein Accession# [P46108](#)

Gene Name CRK

Gene Alias CRKII

Gene Description v-crk sarcoma virus CT10 oncogene homolog (avian)

Omim ID [164762](#)

Gene Ontology [Hyperlink](#)

Gene Summary This gene encodes a member of an adapter protein family that binds to several tyrosine-phosphorylated proteins. The product of this gene has several SH2 and SH3 domains (src-homology domains) and is involved in several signaling pathways, recruiting cytoplasmic proteins in the vicinity of tyrosine kinase through SH2-phosphotyrosine interaction. The N-terminal SH2 domain of this protein functions as a positive regulator of transformation whereas the C-terminal SH3 domain functions as a negative regulator of transformation. Two alternative transcripts encoding different isoforms with distinct biological activity have been described. [provided by RefSeq]

Other Designations avian sarcoma virus CT10 (v-crk) oncogene homolog|v-crk avian sarcoma virus CT10 oncogene homolog|v-crk sarcoma virus CT10 oncogene homolog

Publication Reference

- [Anabolic effects of a G protein-coupled receptor kinase inhibitor expressed in osteoblasts.](#)

Spurney RF, Flannery PJ, Garner SC, Athirakul K, Liu S, Guilak F, Quarles LD.

The Journal of Clinical Investigation 2002 May; 109(10):1361.

- [Isolation of Trypanosoma brucei CYC2 and CYC3 cyclin genes by rescue of a yeast G\(1\) cyclin mutant. Functional characterization of CYC2.](#)

Van Hellemond JJ, Neuville P, Schwarz RT, Matthews KR, Mottram JC.

The Journal of Biological Chemistry 2000 Mar; 275(12):8315.

Application: WB-Tr, S. cerevisiae, Strain L40

Pathway

- [Chemokine signaling pathway](#)

- [Chronic myeloid leukemia](#)
- [ErbB signaling pathway](#)
- [Fc gamma R-mediated phagocytosis](#)
- [Focal adhesion](#)
- [Insulin signaling pathway](#)
- [MAPK signaling pathway](#)
- [Neurotrophin signaling pathway](#)
- [Pathways in cancer](#)
- [Regulation of actin cytoskeleton](#)
- [Renal cell carcinoma](#)