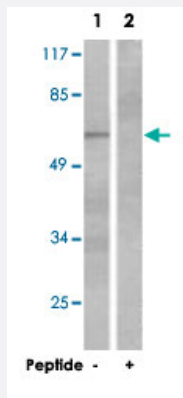


PTPN6 polyclonal antibody

Catalog # PAB18105 Size 100 ug

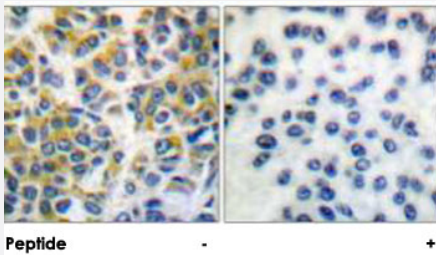
Applications



Western Blot (Cell lysate)

Western blot analysis of extracts from NIH/3T3 cells, using PTPN6 polyclonal antibody (Cat # PAB18105).

Peptide "+" means "peptide blocking".



Immunohistochemistry (Formalin/PFA-fixed paraffin-embedded sections)

Immunohistochemical analysis of paraffin-embedded human breast carcinoma tissue using PTPN6 polyclonal antibody (Cat # PAB18105).

Peptide "+" means "peptide blocking".

Specification

Product Description	Rabbit polyclonal antibody raised against synthetic peptide of PTPN6.
Immunogen	A synthetic peptide corresponding to human PTPN6.
Host	Rabbit
Reactivity	Human, Mouse, Rat
Specificity	This antibody is specific to PTPN6.
Form	Liquid

Purification	Affinity purification
Concentration	1 mg/mL
Recommend Usage	Western Blot (1:500-1:1000) Immunohistochemistry (1:50-1:100) ELISA (1:20000) The optimal working dilution should be determined by the end user.
Storage Buffer	In PBS, 150mM NaCl, pH 7.4 (50% glycerol, 0.02% sodium azide)
Storage Instruction	Store at -20°C. Aliquot to avoid repeated freezing and thawing.
Note	This product contains sodium azide: a POISONOUS AND HAZARDOUS SUBSTANCE which should be handled by trained staff only.

Applications

- Western Blot (Cell lysate)

Western blot analysis of extracts from NIH/3T3 cells, using PTPN6 polyclonal antibody (Cat # PAB18105).
Peptide "+" means "peptide blocking".

- Immunohistochemistry (Formalin/PFA-fixed paraffin-embedded sections)

Immunohistochemical analysis of paraffin-embedded human breast carcinoma tissue using PTPN6 polyclonal antibody (Cat # PAB18105).
Peptide "+" means "peptide blocking".

- Enzyme-linked Immunoabsorbent Assay

Gene Info — PTPN6

Entrez GeneID	5777
Protein Accession#	P29350
Gene Name	PTPN6
Gene Alias	HCP, HCPH, HPTP1C, PTP-1C, SH-PTP1, SHP-1, SHP-1L, SHP1
Gene Description	protein tyrosine phosphatase, non-receptor type 6
Omim ID	176883
Gene Ontology	Hyperlink

Gene Summary

The protein encoded by this gene is a member of the protein tyrosine phosphatase (PTP) family. PTPs are known to be signaling molecules that regulate a variety of cellular processes including cell growth, differentiation, mitotic cycle, and oncogenic transformation. N-terminal part of this PTP contains two tandem Src homolog (SH2) domains, which act as protein phospho-tyrosine binding domains, and mediate the interaction of this PTP with its substrates. This PTP is expressed primarily in hematopoietic cells, and functions as an important regulator of multiple signaling pathways in hematopoietic cells. This PTP has been shown to interact with, and dephosphorylate a wide spectrum of phospho-proteins involved in hematopoietic cell signaling. Multiple alternatively spliced variants of this gene, which encode distinct isoforms, have been reported. [provided by RefSeq

Other Designations

hematopoietic cell phosphatase|hematopoietic cell protein-tyrosine phosphatase|protein-tyrosine phosphatase 1C

Publication Reference

- [The membrane-proximal immunoreceptor tyrosine-based inhibitory motif is critical for the inhibitory signaling mediated by Siglecs-7 and -9, CD33-related Siglecs expressed on human monocytes and NK cells.](#)

Avril T, Floyd H, Lopez F, Vivier E, Crocker PR.

Journal of Immunology 2004 Dec; 173(11):6841.

Application: WB, Rabbit, RBL cells

- [The association between integrin-associated protein and SHPS-1 regulates insulin-like growth factor-I receptor signaling in vascular smooth muscle cells.](#)

Maile LA, Badley-Clarke J, Clemmons DR.

Molecular Biology of the Cell 2003 Sep; 14(9):3519.

Pathway

- [Adherens junction](#)
- [B cell receptor signaling pathway](#)
- [Jak-STAT signaling pathway](#)
- [Natural killer cell mediated cytotoxicity](#)
- [T cell receptor signaling pathway](#)

Disease

- [Alzheimer disease](#)

- [Cerebral Amyloid Angiopathy](#)
- [Genetic Predisposition to Disease](#)
- [Lupus Erythematosus](#)
- [Neuroblastoma](#)