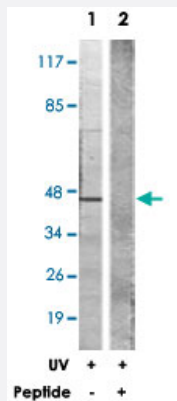


# KRT18 polyclonal antibody

Catalog # PAB18098

Size 100 ug

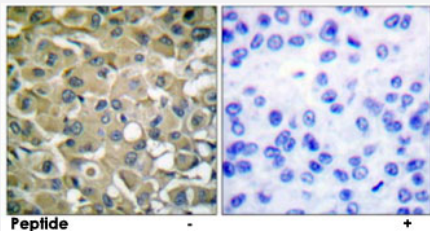
## Applications



### Western Blot (Cell lysate)

Western blot analysis of extracts from HeLa cells treated with UV (5 min), using KRT18 polyclonal antibody (Cat # PAB18098).

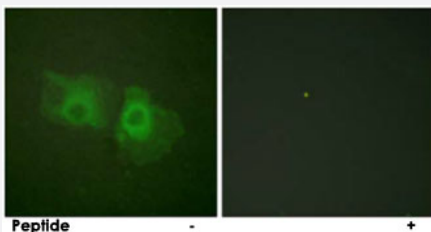
Peptide "+" means "peptide blocking".



### Immunohistochemistry (Formalin/PFA-fixed paraffin-embedded sections)

Immunohistochemical analysis of paraffin-embedded human breast carcinoma tissue using KRT18 polyclonal antibody (Cat # PAB18098).

Peptide "+" means "peptide blocking".



### Immunofluorescence

Immunofluorescence analysis of HeLa cells, using KRT18 polyclonal antibody (Cat # PAB18098).

Peptide "+" means "peptide blocking".

## Specification

### Product Description

Rabbit polyclonal antibody raised against synthetic peptide of KRT18.

<b>Immunogen</b>	A synthetic peptide corresponding to human KRT18.
<b>Host</b>	Rabbit
<b>Reactivity</b>	Human, Mouse, Rat
<b>Specificity</b>	This antibody is specific to KRT18.
<b>Form</b>	Liquid
<b>Purification</b>	Affinity purification
<b>Concentration</b>	1 mg/mL
<b>Recommend Usage</b>	Western Blot (1:500-1:1000) Immunohistochemistry (1:50-1:100) Immunofluorescence (1:500-1:1000) ELISA (1:40000) The optimal working dilution should be determined by the end user.
<b>Storage Buffer</b>	In PBS, 150mM NaCl, pH 7.4 (50% glycerol, 0.02% sodium azide)
<b>Storage Instruction</b>	Store at -20°C. Aliquot to avoid repeated freezing and thawing.
<b>Note</b>	This product contains sodium azide: a POISONOUS AND HAZARDOUS SUBSTANCE which should be handled by trained staff only.

## Applications

- Western Blot (Cell lysate)

Western blot analysis of extracts from HeLa cells treated with UV (5 min), using KRT18 polyclonal antibody (Cat # PAB18098).  
Peptide "+" means "peptide blocking".

- Immunohistochemistry (Formalin/PFA-fixed paraffin-embedded sections)

Immunohistochemical analysis of paraffin-embedded human breast carcinoma tissue using KRT18 polyclonal antibody (Cat # PAB18098).  
Peptide "+" means "peptide blocking".

- Immunofluorescence

Immunofluorescence analysis of HeLa cells, using KRT18 polyclonal antibody (Cat # PAB18098).  
Peptide "+" means "peptide blocking".

- Immunoprecipitation

- Enzyme-linked Immunoabsorbent Assay

## Gene Info — KRT18

**Entrez GeneID** [3875](#)

**Protein Accession#** [P05783](#)

**Gene Name** KRT18

**Gene Alias** CYK18, K18

**Gene Description** keratin 18

**Omim ID** [148070 215600](#)

**Gene Ontology** [Hyperlink](#)

**Gene Summary** KRT18 encodes the type I intermediate filament chain keratin 18. Keratin 18, together with its filament partner keratin 8, are perhaps the most commonly found members of the intermediate filament gene family. They are expressed in single layer epithelial tissues of the body. Mutations in this gene have been linked to cryptogenic cirrhosis. Two transcript variants encoding the same protein have been found for this gene. [provided by RefSeq]

**Other Designations** cell proliferation-inducing protein 46|cytokeratin 18

## Publication Reference

- [Cell-specific expression of functional glucose transporter 8 in mammary gland.](#)

Lorena Mardones, Katia Muñoz, Marcelo Villagrán.

Biochemical and Biophysical Research Communications 2021 Aug; 567:125.

Application: IF, IHC-P, Human, Mouse, 1-7HB2 cells, Mouse mammary glands

- [Keratins turn over by ubiquitination in a phosphorylation-modulated fashion.](#)

Ku NO, Omary MB.

The Journal of Cell Biology 2000 May; 149(3):547.

Application: WB-Ce, WB-Tr, Human, Mouse, HT-29, BHK cells

## Pathway

- [Pathogenic Escherichia coli infection - EHEC](#)

## Disease

- [Cleft Lip](#)
- [Cleft Palate](#)
- [Drug-Induced Liver Injury](#)
- [Genetic Predisposition to Disease](#)
- [Liver Cirrhosis](#)
- [Liver Failure](#)