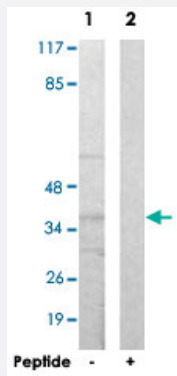


ALX3 polyclonal antibody

Catalog # PAB18084 Size 100 ug

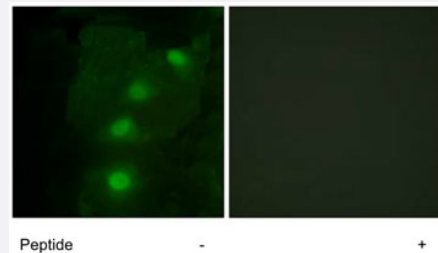
Applications



Western Blot (Cell lysate)

Western blot analysis of extracts from 293 cells, using ALX3 polyclonal antibody (Cat # PAB18084).

Peptide "+" means "with peptide blocking".



Immunofluorescence

Immunofluorescence analysis of HeLa cells, using ALX3 polyclonal antibody (Cat # PAB18084).

Peptide "+" means "with peptide blocking".

Specification

Product Description	Rabbit polyclonal antibody raised against synthetic peptide of ALX3.
Immunogen	A synthetic peptide corresponding to human ALX3.
Host	Rabbit
Reactivity	Human, Mouse, Rat
Specificity	This antibody is specific to ALX3.
Form	Liquid

Recommend Usage	Western Blot (1:500~1:1000) Immunofluorescence (1:500~1:1000) ELISA (1:5000) The optimal working dilution should be determined by the end user.
Storage Buffer	In PBS, 150mM NaCl, pH 7.4 (50% glycerol, 0.02% sodium azide)
Storage Instruction	Store at -20°C. Aliquot to avoid repeated freezing and thawing.
Note	This product contains sodium azide: a POISONOUS AND HAZARDOUS SUBSTANCE which should be handled by trained staff only.

Applications

- Western Blot (Cell lysate)

Western blot analysis of extracts from 293 cells, using ALX3 polyclonal antibody (Cat # PAB18084).
Peptide "+" means "with peptide blocking".

- Immunofluorescence

Immunofluorescence analysis of HeLa cells, using ALX3 polyclonal antibody (Cat # PAB18084).
Peptide "+" means "with peptide blocking".

- Enzyme-linked Immunoabsorbent Assay

Gene Info — ALX3

Entrez GeneID	257
Protein Accession#	O95076
Gene Name	ALX3
Gene Alias	MGC138212, MGC141988
Gene Description	ALX homeobox 3
Omim ID	606014
Gene Ontology	Hyperlink
Gene Summary	This gene encodes a nuclear protein with a homeobox DNA-binding domain that functions as a transcriptional regulator involved in cell-type differentiation and development. Preferential methylation of this gene's promoter is associated with advanced-stage neuroblastoma tumors. [provided by RefSeq]

Other Designations

OTTHUMP00000013372|aristaless-like homeobox 3

Publication Reference

- [Combined restriction landmark genomic scanning and virtual genome scans identify a novel human homeobox gene, ALX3, that is hypermethylated in neuroblastoma.](#)

Wimmer K, Zhu Xx XX, Rouillard JM, Ambros PF, Lamb BJ, Kuick R, Eckart M, Weinhausl A, Fonatsch C, Hanash SM.

Genes, Chromosomes & Cancer 2002 Mar; 33(3):285.

Disease

- [Cleft Lip](#)
- [Cleft Palate](#)