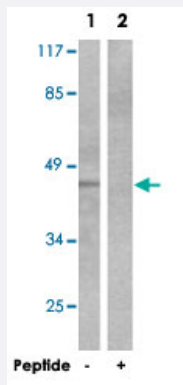


# ACTG2 polyclonal antibody

Catalog # PAB18051      Size 100 ug

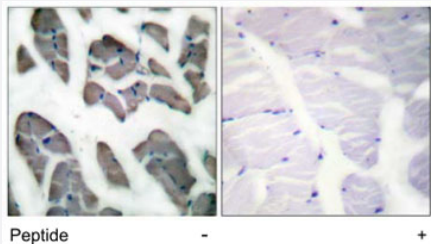
## Applications



### Western Blot (Cell lysate)

Western blot analysis of extracts from COLO 205 cells, using ACTG2 polyclonal antibody (Cat # PAB18051).

Peptide "+" means "with peptide blocking".



### Immunohistochemistry (Formalin/PFA-fixed paraffin-embedded sections)

Immunohistochemical analysis of paraffin-embedded human muscle tissue using ACTG2 polyclonal antibody (Cat # PAB18051).

Peptide "+" means "with peptide blocking".

## Specification

Product Description	Rabbit polyclonal antibody raised against synthetic peptide of ACTG2.
Immunogen	A synthetic peptide corresponding to human ACTG2.
Host	Rabbit
Reactivity	Human, Mouse, Rat
Specificity	This antibody is specific to ACTG2.
Form	Liquid

<b>Recommend Usage</b>	Western Blot (1:500~1:1000) Immunohistochemistry (1:50~1:100) ELISA(1:20000) The optimal working dilution should be determined by the end user.
<b>Storage Buffer</b>	In PBS, 150mM NaCl, pH 7.4 (50% glycerol, 0.02% sodium azide)
<b>Storage Instruction</b>	Store at -20°C. Aliquot to avoid repeated freezing and thawing.
<b>Note</b>	This product contains sodium azide: a POISONOUS AND HAZARDOUS SUBSTANCE which should be handled by trained staff only.

## Applications

- Western Blot (Cell lysate)

Western blot analysis of extracts from COLO 205 cells, using ACTG2 polyclonal antibody (Cat # PAB18051).  
Peptide "+" means "with peptide blocking".

- Immunohistochemistry (Formalin/PFA-fixed paraffin-embedded sections)

Immunohistochemical analysis of paraffin-embedded human muscle tissue using ACTG2 polyclonal antibody (Cat # PAB18051).  
Peptide "+" means "with peptide blocking".

- Immunohistochemistry

- Enzyme-linked Immunoabsorbent Assay

## Gene Info — ACTG2

<b>Entrez GeneID</b>	<a href="#">72</a>
<b>Protein Accession#</b>	<a href="#">P63267</a>
<b>Gene Name</b>	ACTG2
<b>Gene Alias</b>	ACT, ACTA3, ACTE, ACTL3, ACTSG
<b>Gene Description</b>	actin, gamma 2, smooth muscle, enteric
<b>Omim ID</b>	<a href="#">102545</a>
<b>Gene Ontology</b>	<a href="#">Hyperlink</a>

## Gene Summary

Actins are highly conserved proteins that are involved in various types of cell motility, and maintenance of the cytoskeleton. In vertebrates, three main groups of actin isoforms, alpha, beta and gamma have been identified. The alpha actins are found in muscle tissues and are a major constituent of the contractile apparatus. The beta and gamma actins co-exist in most cell types as components of the cytoskeleton, and as mediators of internal cell motility. Actin, gamma 2, encoded by this gene, is a smooth muscle actin found in enteric tissues. [provided by RefSeq]

## Other Designations

actin, gamma 2|actin-like protein|alpha-actin 3|smooth muscle gamma actin

## Publication Reference

- [Biological activities encoded by the murine mesenchymal stem cell transcriptome provide a basis for their developmental potential and broad therapeutic efficacy.](#)

Phinney DG, Hill K, Michelson C, DuTreil M, Hughes C, Humphries S, Wilkinson R, Baddoo M, Bayly E.  
Stem Cells International 2005 Aug; 24(1):186.

- [Microarray analysis of global changes in gene expression during cardiac myocyte differentiation.](#)

Peng CF, Wei Y, Levsky JM, McDonald TV, Childs G, Kitsis RN.  
Physiological Genomics 2002 Apr; 9(3):145.

- [cDNA cloning and characterization of interleukin 2-induced genes in a cloned T helper lymphocyte.](#)

Sabath DE, Podolin PL, Comber PG, Prystowsky MB.  
The Journal of Biological Chemistry 1990 Jul; 265(21):12671.

- [Expression of transfected mutant beta-actin genes: alterations of cell morphology and evidence for autoregulation in actin pools.](#)

Leavitt J, Ng SY, Aebi U, Varma M, Latter G, Burbeck S, Kedes L, Gunning P.  
Molecular and Cellular Biology 1987 Jul; 7(7):2457.

Application: IF, Human, KD cells

## Pathway

- [Vascular smooth muscle contraction](#)

## Disease

- [Cholestasis](#)

- [Pre-Eclampsia](#)
- [Pregnancy Complications](#)