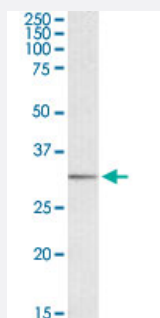


MAPRE3 polyclonal antibody

Catalog # PAB17863 Size 100 ug

Applications



Western Blot (Tissue lysate)

MAPRE3 polyclonal antibody (Cat # PAB17863) (0.1 ug/mL) staining of human brain (amygdala) lysate (35 ug protein in RIPA buffer). Primary incubation was 1 hour. Detected by chemiluminescence.

Specification

Product Description	Goat polyclonal antibody raised against synthetic peptide of MAPRE3.
Immunogen	A synthetic peptide corresponding to amino acids at internal region of human MAPRE3.
Sequence	SGRLSNVAPPCILR
Host	Goat
Theoretical MW (kDa)	32
Reactivity	Human, Mouse
Form	Liquid
Purification	Antigen affinity purification
Concentration	0.5 mg/mL
Recommend Usage	ELISA (1:64000) Western Blot (0.1-1.0 ug/mL) The optimal working dilution should be determined by the end user.
Storage Buffer	In 0.5 mg/mL Tris saline, pH 7.3 (0.02% sodium azide, 0.5% BSA)

Storage Instruction

Store at -20°C.
Aliquot to avoid repeated freezing and thawing.

Note

This product contains sodium azide: a POISONOUS AND HAZARDOUS SUBSTANCE which should be handled by trained staff only.

Applications

- Western Blot (Tissue lysate)

MAPRE3 polyclonal antibody (Cat # PAB17863) (0.1 ug/mL) staining of human brain (amygdala) lysate (35 ug protein in RIPA buffer). Primary incubation was 1 hour. Detected by chemiluminescence.

- Enzyme-linked Immunoabsorbent Assay

Gene Info — MAPRE3

Entrez GeneID[22924](#)**Protein Accession#**[NP_036458.2](#)**Gene Name**

MAPRE3

Gene Alias

EB3, EBF3, EBF3-S, RP3

Gene Description

microtubule-associated protein, RP/EB family, member 3

Omim ID[605788](#)**Gene Ontology**[Hyperlink](#)**Gene Summary**

The protein encoded by this gene is a member of the RP/EB family of genes. The protein localizes to the cytoplasmic microtubule network and binds APC, a homolog of the adenomatous polyposis coli tumor suppressor gene. [provided by RefSeq]

Other Designations

APC binding protein