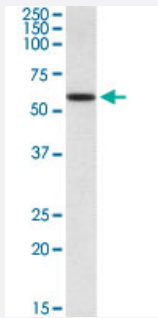


# DIXDC1 polyclonal antibody

Catalog # PAB17857      Size 100 ug

## Applications



### Western Blot (Tissue lysate)

DIXDC1 polyclonal antibody (Cat # PAB17857) (0.5 ug/mL) staining of human skeletal muscle lysate (35 ug protein in RIPA buffer). Primary incubation was 1 hour. Detected by chemiluminescence.

## Specification

<b>Product Description</b>	Goat polyclonal antibody raised against synthetic peptide of DIXDC1.
<b>Immunogen</b>	A synthetic peptide corresponding to amino acids at internal region of human DIXDC1.
<b>Sequence</b>	C-DVSYHQVDLERE
<b>Host</b>	Goat
<b>Theoretical MW (kDa)</b>	77.5, 53.9
<b>Reactivity</b>	Human
<b>Form</b>	Liquid
<b>Purification</b>	Antigen affinity purification
<b>Concentration</b>	0.5 mg/mL
<b>Recommend Usage</b>	ELISA (1:64000) Western Blot (0.5-2 ug/mL) The optimal working dilution should be determined by the end user.
<b>Storage Buffer</b>	In 0.5 mg/mL Tris saline, pH 7.3 (0.02% sodium azide, 0.5% BSA)

**Storage Instruction**

Store at -20°C.  
Aliquot to avoid repeated freezing and thawing.

**Note**

This product contains sodium azide: a POISONOUS AND HAZARDOUS SUBSTANCE which should be handled by trained staff only.

## Applications

- Western Blot (Tissue lysate)

DIXDC1 polyclonal antibody (Cat # PAB17857) (0.5 ug/mL) staining of human skeletal muscle lysate (35 ug protein in RIPA buffer). Primary incubation was 1 hour. Detected by chemiluminescence.

- Enzyme-linked Immunoabsorbent Assay

## Gene Info — DIXDC1

**Entrez GeneID**[85458](#)**Protein Accession#**[NP\\_001033043.1;NP\\_219493.1](#)**Gene Name**

DIXDC1

**Gene Alias**

CCD1, KIAA1735

**Gene Description**

DIX domain containing 1

**Gene Ontology**[Hyperlink](#)**Other Designations**

-