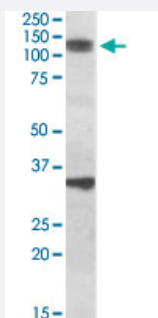


CCAR1 polyclonal antibody

Catalog # PAB17856 Size 100 ug

Applications



Western Blot (Tissue lysate)

CCAR1 polyclonal antibody (Cat # PAB17856) (1 ug/mL) staining of rat skeletal muscle lysate (35 ug protein in RIPA buffer). Primary incubation was 1 hour. Detected by chemiluminescence.

Specification

Product Description	Goat polyclonal antibody raised against synthetic peptide of CCAR1.
Immunogen	A synthetic peptide corresponding to near human CCAR1.
Sequence	RYCKERPSKDKE
Host	Goat
Theoretical MW (kDa)	133
Reactivity	Mouse, Rat
Form	Liquid
Purification	Antigen affinity purification
Concentration	0.5 mg/mL
Recommend Usage	ELISA (1:16000) Western Blot (1-3 ug/mL) The optimal working dilution should be determined by the end user.
Storage Buffer	In 0.5 mg/mL Tris saline, pH 7.3 (0.02% sodium azide, 0.5% BSA)

Storage Instruction

Store at -20°C.
Aliquot to avoid repeated freezing and thawing.

Note

This product contains sodium azide: a POISONOUS AND HAZARDOUS SUBSTANCE which should be handled by trained staff only.

Applications

- Western Blot (Tissue lysate)

CCAR1 polyclonal antibody (Cat # PAB17856) (1 ug/mL) staining of rat skeletal Muscle lysate (35 ug protein in RIPA buffer). Primary incubation was 1 hour. Detected by chemiluminescence.

- Enzyme-linked Immunoabsorbent Assay

Gene Info — CCAR1

Entrez GeneID[55749](#)**Protein Accession#**[NP_060707.2](#)**Gene Name**

CCAR1

Gene Alias

CARP-1, CARP1, MGC44628, RP11-437A18.1

Gene Description

cell division cycle and apoptosis regulator 1

Gene Ontology[Hyperlink](#)**Other Designations**

OTTHUMP00000019709|cell-cycle and apoptosis regulatory protein 1

Disease

- [Alzheimer Disease](#)
- [Genetic Predisposition to Disease](#)