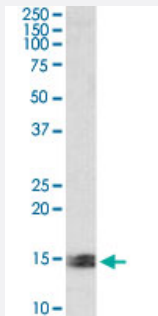


# CARD17 polyclonal antibody

Catalog # PAB17853      Size 100 ug

## Applications



### Western Blot (Tissue lysate)

CARD17 polyclonal antibody (Cat # PAB17853) (0.5 ug/mL) staining of human kidney lysate (35 ug protein in RIPA buffer). Primary incubation was 1 hour. Detected by chemiluminescence.

## Specification

**Product Description** Goat polyclonal antibody raised against synthetic peptide of CARD17.

**Immunogen** A synthetic peptide corresponding to C-terminus of human CARD17.

**Sequence** C-NHLTTQDSQIVLPS

**Host** Goat

**Theoretical MW (kDa)** 11.9

**Reactivity** Human

**Form** Liquid

**Purification** Antigen affinity purification

**Concentration** 0.5 mg/mL

**Recommend Usage** ELISA (1:8000)  
Western Blot (0.5-1.5 ug/mL)  
The optimal working dilution should be determined by the end user.

**Storage Buffer** In 0.5 mg/mL Tris saline, pH 7.3 (0.02% sodium azide, 0.5% BSA)

**Storage Instruction**

Store at -20°C.  
Aliquot to avoid repeated freezing and thawing.

**Note**

This product contains sodium azide: a POISONOUS AND HAZARDOUS SUBSTANCE which should be handled by trained staff only.

## Applications

- Western Blot (Tissue lysate)

CARD17 polyclonal antibody (Cat # PAB17853) (0.5 ug/mL) staining of human kidney lysate (35 ug protein in RIPA buffer). Primary incubation was 1 hour. Detected by chemiluminescence.

- Enzyme-linked Immunoabsorbent Assay

## Gene Info — CARD17

**Entrez GeneID**[440068](#)**Protein Accession#**[NP\\_001007233.1](#)**Gene Name**

CARD17

**Gene Alias**

INCA

**Gene Description**

caspase recruitment domain family, member 17

**Omim ID**[609490](#)**Gene Ontology**[Hyperlink](#)**Gene Summary**

O

**Other Designations**

Inhibitory CARD|inhibitory caspase recruitment domain (CARD) protein