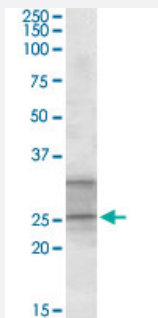


PEBP4 polyclonal antibody

Catalog # PAB17819 Size 100 ug

Applications



Western Blot (Tissue lysate)

PEBP4 polyclonal antibody (Cat # PAB17819) (1 ug/mL) staining of human heart lysate (35 ug protein in RIPA buffer). Primary incubation was 1 hour. Detected by chemiluminescence.

Specification

Product Description Goat polyclonal antibody raised against synthetic peptide of PEBP4.

Immunogen A synthetic peptide corresponding to human PEBP4.

Sequence C-RERASEPKHKNQAE

Host Goat

Theoretical MW (kDa) 25.7

Reactivity Human

Form Liquid

Purification Antigen affinity purification

Concentration 0.5 mg/mL

Recommend Usage ELISA (1:4000)
Western Blot (1-3 ug/mL)
The optimal working dilution should be determined by the end user.

Storage Buffer In 0.5 mg/mL Tris saline, pH 7.3 (0.02% sodium azide, 0.5% BSA)

Storage Instruction

Store at -20°C.
Aliquot to avoid repeated freezing and thawing.

Note

This product contains sodium azide: a POISONOUS AND HAZARDOUS SUBSTANCE which should be handled by trained staff only.

Applications

- Western Blot (Tissue lysate)

PEBP4 polyclonal antibody (Cat # PAB17819) (1 ug/mL) staining of human heart lysate (35 ug protein in RIPA buffer). Primary incubation was 1 hour. Detected by chemiluminescence.

- Enzyme-linked Immunoabsorbent Assay

Gene Info — PEBP4

Entrez GeneID[157310](#)**Protein Accession#**[NP_659399.2](#)**Gene Name**

PEBP4

Gene Alias

CORK-1, CORK1, GWTM1933, MGC22776, PRO4408

Gene Description

phosphatidylethanolamine-binding protein 4

Gene Ontology[Hyperlink](#)**Gene Summary**

The phosphatidylethanolamine (PE)-binding proteins, including PEBP4, are an evolutionarily conserved family of proteins with pivotal biologic functions, such as lipid binding and inhibition of serine proteases (Wang et al., 2004 [PubMed 15302887]).[supplied by OMIM]

Other Designations

cousin-of-RKIP 1 protein

Disease

- [Celiac Disease](#)
- [Genetic Predisposition to Disease](#)
- [Tobacco Use Disorder](#)