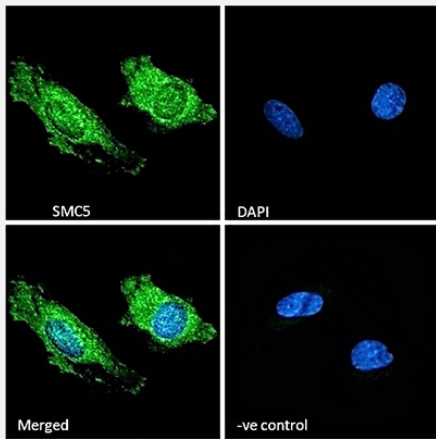


# SMC5 polyclonal antibody

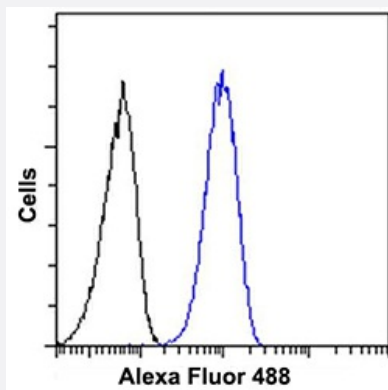
Catalog # PAB17817      Size 100 ug

## Applications



### Immunofluorescence

SMC5 polyclonal antibody (Cat # PAB17817) Immunofluorescence analysis of paraformaldehyde fixed HeLa cells, permeabilized with 0.15% Triton. Primary incubation 1hr (10 ug/mL) followed by Alexa Fluor 488 secondary antibody (2 ug/mL), showing speckled nuclear and cytoplasmic staining. The nuclear stain is DAPI (blue). Negative control: Unimmunized goat IgG (10 ug/mL) followed by Alexa Fluor 488 secondary antibody (2 ug/mL).



### Flow Cytometry

SMC5 polyclonal antibody (Cat # PAB17817) Flow cytometric analysis of paraformaldehyde fixed HeLa cells (blue line), permeabilized with 0.5% Triton. Primary incubation 1hr (10 ug/mL) followed by Alexa Fluor 488 secondary antibody (1 ug/mL). IgG control: Unimmunized goat IgG (black line) followed by Alexa Fluor 488 secondary antibody.

## Specification

Product Description	Goat polyclonal antibody raised against synthetic peptide of SMC5.
Immunogen	A synthetic peptide corresponding to amino acids at internal region of human SMC5.
Sequence	C-TSKHLEHKDNELRQ
Host	Goat
Theoretical MW (kDa)	129

Form	Liquid
Purification	Antigen affinity purification
Concentration	0.5 mg/mL
Recommend Usage	ELISA (1:128000) Immunofluorescence (10 ug/mL) Flow Cytometry (10 ug/mL) The optimal working dilution should be determined by the end user.
Storage Buffer	In 0.5 mg/mL Tris saline, pH 7.3 (0.02% sodium azide, 0.5% BSA)
Storage Instruction	Store at -20°C. Aliquot to avoid repeated freezing and thawing.
Note	This product contains sodium azide: a POISONOUS AND HAZARDOUS SUBSTANCE which should be handled by trained staff only.

## Applications

- Immunofluorescence

SMC5 polyclonal antibody (Cat # PAB17817) Immunofluorescence analysis of paraformaldehyde fixed HeLa cells, permeabilized with 0.15% Triton. Primary incubation 1hr (10 ug/mL) followed by Alexa Fluor 488 secondary antibody (2 ug/mL), showing speckled nuclear and cytoplasmic staining. The nuclear stain is DAPI (blue). Negative control: Unimmunized goat IgG (10 ug/mL) followed by Alexa Fluor 488 secondary antibody (2 ug/mL).

- Enzyme-linked Immunoabsorbent Assay

- Flow Cytometry

SMC5 polyclonal antibody (Cat # PAB17817) Flow cytometric analysis of paraformaldehyde fixed HeLa cells (blue line), permeabilized with 0.5% Triton. Primary incubation 1hr (10 ug/mL) followed by Alexa Fluor 488 secondary antibody (1 ug/mL). IgG control: Unimmunized goat IgG (black line) followed by Alexa Fluor 488 secondary antibody.

## Gene Info — SMC5

Entrez GeneID	<a href="#">23137</a>
Protein Accession#	<a href="#">NP_055925.2</a>
Gene Name	SMC5
Gene Alias	KIAA0594, SMC5L1
Gene Description	structural maintenance of chromosomes 5

Omim ID	<a href="#">609386</a>
Gene Ontology	<a href="#">Hyperlink</a>
Other Designations	OTTHUMP00000063367 SMC5 protein SMC5 structural maintenance of chromosomes 5-like 1

## Disease

- [Genetic Predisposition to Disease](#)
- [Prostatic Neoplasms](#)
- [Tobacco Use Disorder](#)