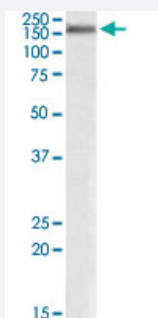


TJP1 polyclonal antibody

Catalog # PAB17813 Size 100 ug

Applications



Western Blot (Tissue lysate)

TJP1 polyclonal antibody (Cat # PAB17813) (0.3 ug/mL) staining of human cerebral cortex lysate (35 ug protein in RIPA buffer). Primary incubation was 1 hour. Detected by chemiluminescence.

Specification

Product Description	Goat polyclonal antibody raised against synthetic peptide of TJP1.
Immunogen	A synthetic peptide corresponding to amino acids at internal region of human TJP1.
Sequence	C-PKPTSQNQFSEHDKT
Host	Goat
Theoretical MW (kDa)	195, 187
Reactivity	Human
Form	Liquid
Purification	Antigen affinity purification
Concentration	0.5 mg/mL
Recommend Usage	ELISA (1:128000) Western Blot (0.3-1 ug/mL) The optimal working dilution should be determined by the end user.
Storage Buffer	In 0.5 mg/mL Tris saline, pH 7.3 (0.02% sodium azide, 0.5% BSA)

Storage Instruction

Store at -20°C.
Aliquot to avoid repeated freezing and thawing.

Note

This product contains sodium azide: a POISONOUS AND HAZARDOUS SUBSTANCE which should be handled by trained staff only.

Applications

- Western Blot (Tissue lysate)

TJP1 polyclonal antibody (Cat # PAB17813) (0.3 ug/mL) staining of human cerebral cortex lysate (35 ug protein in RIPA buffer). Primary incubation was 1 hour. Detected by chemiluminescence.

- Enzyme-linked Immunoabsorbent Assay

Gene Info — TJP1

Entrez GeneID[7082](#)**Protein Accession#**[NP_003248.3;NP_783297.2](#)**Gene Name**

TJP1

Gene Alias

DKFZp686M05161, MGC133289, ZO-1

Gene Description

tight junction protein 1 (zona occludens 1)

Omim ID[601009](#)**Gene Ontology**[Hyperlink](#)**Gene Summary**

This gene encodes a protein located on a cytoplasmic membrane surface of intercellular tight junctions. The encoded protein may be involved in signal transduction at cell-cell junctions. Two transcript variants encoding distinct isoforms have been identified for this gene. [provided by RefSeq]

Other Designations

OTTHUMP00000174520|tight junction protein 1|tight junction protein ZO-1|zona occludens 1|zonula occludens 1 protein

Pathway

- [Adherens junction](#)

- [Epithelial cell signaling in Helicobacter pylori infection](#)

- [Gap junction](#)
- [Tight junction](#)
- [Vibrio cholerae infection](#)