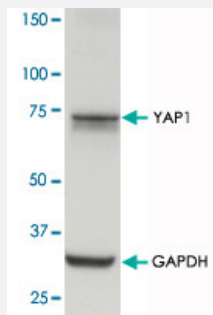


# YAP1 polyclonal antibody

Catalog # PAB17804      Size 100 ug

## Applications



### Western Blot (Cell lysate)

YAP1 polyclonal antibody (Cat # PAB17804) (0.5 ug/mL) staining of MDCK cell lysate (35 ug protein in RIPA buffer). Primary incubation was 1 hour. Detected by chemiluminescence.

## Specification

<b>Product Description</b>	Goat polyclonal antibody raised against synthetic peptide of YAP1.
<b>Immunogen</b>	A synthetic peptide corresponding to amino acids at internal region of human YAP1.
<b>Sequence</b>	TYHSRDESTDS
<b>Host</b>	Goat
<b>Reactivity</b>	Dog
<b>Form</b>	Liquid
<b>Purification</b>	Antigen affinity purification
<b>Concentration</b>	0.5 mg/mL
<b>Recommend Usage</b>	ELISA (1:8000) Western Blot (0.5-2 ug/mL) The optimal working dilution should be determined by the end user.
<b>Storage Buffer</b>	In 0.5 mg/mL Tris saline, pH 7.3 (0.02% sodium azide, 0.5% BSA)

**Storage Instruction**

Store at -20°C.  
Aliquot to avoid repeated freezing and thawing.

**Note**

This product contains sodium azide: a POISONOUS AND HAZARDOUS SUBSTANCE which should be handled by trained staff only.

## Applications

- Western Blot (Cell lysate)

YAP1 polyclonal antibody (Cat # PAB17804) (0.5 ug/mL) staining of MDCK cell lysate (35 ug protein in RIPA buffer). Primary incubation was 1 hour. Detected by chemiluminescence.

- Enzyme-linked Immunoabsorbent Assay

## Gene Info — YAP1

**Entrez GeneID**[10413](#)**Protein Accession#**[NP\\_006097.1](#)**Gene Name**

YAP1

**Gene Alias**

YAP, YAP2, YAP65, YKI

**Gene Description**

Yes-associated protein 1, 65kDa

**Omim ID**[606608](#)**Gene Ontology**[Hyperlink](#)**Gene Summary**

This gene encodes the human ortholog of chicken YAP protein which binds to the SH3 domain of the Yes proto-oncogene product. This protein contains a WW domain that is found in various structural, regulatory and signaling molecules in yeast, nematode, and mammals, and may be involved in protein-protein interaction. [provided by RefSeq]

**Other Designations**

yes-associated protein 2

## Disease

- [Tobacco Use Disorder](#)