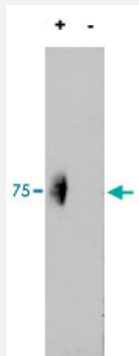


CD244 (phospho Y266) polyclonal antibody

Catalog # PAB17803 Size 100 ug

Applications



Western Blot (Cell lysate)

CD244 polyclonal antibody (Cat # PAB17803) (2 ug/mL) staining of IP from a lysate of human natural killer cells with (+) or without (-) pervanadate treatment of the cells. Primary incubation was 1 hour. Detected by chemiluminescence. Data kindly provided by Dr Nicholas G Clarkson, Sir William Dunn School of Pathology, Oxford, UK.

Specification

Product Description	Goat polyclonal antibody raised against synthetic phosphopeptide of CD244.
Immunogen	Synthetic phosphopeptide corresponding to internal region of residues surrounding Y266 of human CD244.
Sequence	C-EFLTIpYEDVKD
Host	Goat
Reactivity	Human
Form	Liquid
Recommend Usage	ELISA (1:64000) Western Blot (1-3 ug/mL) The optimal working dilution should be determined by the end user.
Storage Buffer	In 0.5 mg/mL Tris saline, pH 7.3 (0.02% sodium azide, 0.5% BSA)
Storage Instruction	Store at -20°C. Aliquot to avoid repeated freezing and thawing.

Note

This product contains sodium azide: a POISONOUS AND HAZARDOUS SUBSTANCE which should be handled by trained staff only.

Applications

- Western Blot (Cell lysate)

CD244 polyclonal antibody (Cat # PAB17803) (2 ug/mL) staining of IP from a lysate of human natural killer cells with (+) or without (-) pervanadate treatment of the cells. Primary incubation was 1 hour. Detected by chemiluminescence. Data kindly provided by Dr Nicholas G Clarkson, Sir William Dunn School of Pathology, Oxford, UK.

- Immunoprecipitation

- Enzyme-linked Immunoabsorbent Assay

Gene Info — CD244

Entrez GeneID	51744
---------------	-----------------------

Protein Accession#	NP_057466.1
--------------------	-----------------------------

Gene Name	CD244
-----------	-------

Gene Alias	2B4, NAIL, NKR2B4, Nmrk, SLAMF4
------------	---------------------------------

Gene Description	CD244 molecule, natural killer cell receptor 2B4
------------------	--

Omim ID	605554
---------	------------------------

Gene Ontology	Hyperlink
---------------	---------------------------

Gene Summary	Natural killer (NK) cells express both activating and inhibitory cell surface receptors. Inhibitory signaling receptors all possess cytoplasmic immunoreceptor tyrosine-based inhibitory motifs, or ITIMs, whereas the activating receptors lack ITIMs and associate with DAP12 (TYROBP; MIM 604142), which contains an immunoreceptor tyrosine-based activation motif, or ITAM. Killer cell immunoglobulin (Ig)-like receptors, or KIRs (see KIR2DL1; MIM 604936), and other NK cell receptors interact with major histocompatibility complex (MHC) molecules (see MIM 142800). Members of the CD2 (MIM 186990) family adhere to each other instead. The cell surface glycoprotein 2B4 is related to CD2 and is implicated in the regulation of NK- and T-cell function (Boles et al., 1999 [PubMed 10458320]).[supplied by OMIM]
--------------	--

Other Designations	CD244 natural killer cell receptor 2B4 NK cell activation inducing ligand NAIL OTTHUMP00000027884 natural killer cell receptor 2B4
--------------------	--

Pathway

- [Natural killer cell mediated cytotoxicity](#)

Disease

- [Arthritis](#)
- [Cell Transformation](#)
- [Genetic Predisposition to Disease](#)
- [Lupus Erythematosus](#)
- [Tobacco Use Disorder](#)