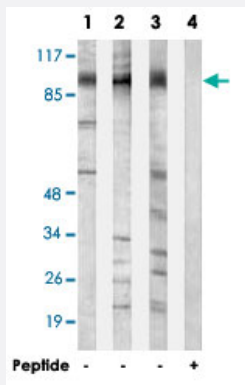


# N4BP1 polyclonal antibody

Catalog # PAB17795      Size 100 ug

## Applications



### Western Blot (Cell lysate)

Western blot analysis of extracts from MCF-7 cells (Lane 1 and lane 4), 293 cells (Lane 2) and Jurkat cells (Lane 3), using N4BP1 polyclonal antibody (Cat # PAB17795).

Peptide "+" means "with peptide blocking".

## Specification

<b>Product Description</b>	Rabbit polyclonal antibody raised against synthetic peptide of N4BP1.
<b>Immunogen</b>	A synthetic peptide corresponding to internal of human N4BP1.
<b>Host</b>	Rabbit
<b>Reactivity</b>	Human
<b>Specificity</b>	This antibody detects endogenous levels of total N4BP1 protein.
<b>Form</b>	Liquid
<b>Recommend Usage</b>	Western Blot (1:500-1:1000) ELISA (1:40000) The optimal working dilution should be determined by the end user.
<b>Storage Buffer</b>	In PBS, pH 7.4 (150mM NaCl, 0.02% sodium azide, 50% glycerol)
<b>Storage Instruction</b>	Store at -20°C. Aliquot to avoid repeated freezing and thawing.

**Note**

This product contains sodium azide: a POISONOUS AND HAZARDOUS SUBSTANCE which should be handled by trained staff only.

## Applications

- Western Blot (Cell lysate)

Western blot analysis of extracts from MCF-7 cells (Lane 1 and lane 4), 293 cells (Lane 2) and Jurkat cells (Lane 3), using N4BP1 polyclonal antibody (Cat # PAB17795).  
Peptide "+" means "with peptide blocking".

- Enzyme-linked Immunoabsorbent Assay

## Gene Info — N4BP1

Entrez GeneID	<a href="#">9683</a>
Protein Accession#	<a href="#">O75113</a>
Gene Name	N4BP1
Gene Alias	FLJ31821, KIAA0615, MGC176730
Gene Description	NEDD4 binding protein 1
Gene Ontology	<a href="#">Hyperlink</a>
Other Designations	Nedd4 binding protein 1

## Disease

- [Genetic Predisposition to Disease](#)