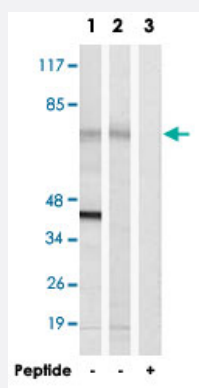


ME3 polyclonal antibody

Catalog # PAB17792 Size 100 ug

Applications



Western Blot (Cell lysate)

Western blot analysis of extracts from NIH/3T3 cells (Lane 1) and RAW 264.7 cells (Lane 2 and lane 3), using ME3 polyclonal antibody (Cat # PAB17792). Peptide "+" means "with peptide blocking".

Specification

Product Description	Rabbit polyclonal antibody raised against synthetic peptide of ME3.
Immunogen	A synthetic peptide corresponding to internal of human ME3.
Host	Rabbit
Reactivity	Human, Mouse
Specificity	This antibody detects endogenous levels of total ME3 protein.
Form	Liquid
Recommend Usage	Western Blot (1:500-1:1000) ELISA (1:40000) The optimal working dilution should be determined by the end user.
Storage Buffer	In PBS, pH 7.4 (150mM NaCl, 0.02% sodium azide, 50% glycerol)
Storage Instruction	Store at -20°C. Aliquot to avoid repeated freezing and thawing.

Note

This product contains sodium azide: a POISONOUS AND HAZARDOUS SUBSTANCE which should be handled by trained staff only.

Applications

- Western Blot (Cell lysate)

Western blot analysis of extracts from NIH/3T3 cells (Lane 1) and RAW 264.7 cells (Lane 2 and lane 3), using ME3 polyclonal antibody (Cat # PAB17792).

Peptide "+" means "with peptide blocking".

- Enzyme-linked Immunoabsorbent Assay

Gene Info — ME3

Entrez GeneID	10873
---------------	-----------------------

Protein Accession#	Q16798
--------------------	------------------------

Gene Name	ME3
-----------	-----

Gene Alias	FLJ34862
------------	----------

Gene Description	malic enzyme 3, NADP(+)-dependent, mitochondrial
------------------	--

Omim ID	604626
---------	------------------------

Gene Ontology	Hyperlink
---------------	---------------------------

Gene Summary	Malic enzyme catalyzes the oxidative decarboxylation of malate to pyruvate using either NAD ⁺ or NADP ⁺ as a cofactor. Mammalian tissues contain 3 distinct isoforms of malic enzyme: a cytosolic NADP(+)-dependent isoform, a mitochondrial NADP(+)-dependent isoform, and a mitochondrial NAD(+)-dependent isoform. This gene encodes a mitochondrial NADP(+)-dependent isoform. Multiple alternatively spliced transcript variants have been found for this gene, but the biological validity of some variants has not been determined. [provided by RefSeq]
--------------	---

Other Designations	NADP-ME malate dehydrogenase malic enzyme, NADP+-dependent, mitochondrial mitochondria l NADP(+)-dependent malic enzyme 3 pyruvic-malic carboxylase
--------------------	---

Pathway

- [Biosynthesis of alkaloids derived from histidine and purine](#)

- [Biosynthesis of alkaloids derived from ornithine](#)

- [Biosynthesis of alkaloids derived from shikimate pathway](#)
- [Biosynthesis of alkaloids derived from terpenoid and polyketide](#)
- [Biosynthesis of terpenoids and steroids](#)
- [Carbon fixation in photosynthetic organisms](#)
- [Metabolic pathways](#)
- [Pyruvate metabolism](#)

Disease

- [Tobacco Use Disorder](#)