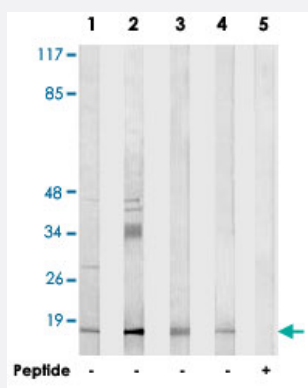


NDUFA4L2 polyclonal antibody

Catalog # PAB17787

Size 100 ug

Applications



Western Blot (Cell lysate)

Western blot analysis of extracts from Jurkat cells (Lane 1), COLO 205 cells (Lane 2), HUVEC cells (Lane 3) and HepG2 cells (Lane 4 and lane 5), using NDUFA4L2 polyclonal antibody (Cat # PAB17787).

Peptide "+" means "with peptide blocking".

Specification

Product Description Rabbit polyclonal antibody raised against synthetic peptide of NDUFA4L2.

Immunogen A synthetic peptide corresponding to internal of human NDUFA4L2.

Host Rabbit

Reactivity Human, Mouse

Specificity This antibody detects endogenous levels of total NDUFA4L2 protein.

Form Liquid

Recommend Usage Western Blot (1:500-1:1000)
ELISA (1:20000)
The optimal working dilution should be determined by the end user.

Storage Buffer In PBS, pH 7.4 (150mM NaCl, 0.02% sodium azide, 50% glycerol)

Storage Instruction Store at -20°C.
Aliquot to avoid repeated freezing and thawing.

Note

This product contains sodium azide: a POISONOUS AND HAZARDOUS SUBSTANCE which should be handled by trained staff only.

Applications

- Western Blot (Cell lysate)

Western blot analysis of extracts from Jurkat cells (Lane 1), COLO 205 cells (Lane 2), HUVEC cells (Lane 3) and HepG2 cells (Lane 4 and lane 5), using NDUFA4L2 polyclonal antibody (Cat # PAB17787).
Peptide "+" means "with peptide blocking".

- Enzyme-linked Immunoabsorbent Assay

Gene Info — NDUFA4L2

Entrez GeneID	56901
---------------	-----------------------

Protein Accession#	Q9NRX3
--------------------	------------------------

Gene Name	NDUFA4L2
-----------	----------

Gene Alias	FLJ26118, NUOMS
------------	-----------------

Gene Description	NADH dehydrogenase (ubiquinone) 1 alpha subcomplex, 4-like 2
------------------	--

Gene Ontology	Hyperlink
---------------	---------------------------

Gene Summary	O
--------------	---

Other Designations	NADH:ubiquinone oxidoreductase MLRQ subunit homolog
--------------------	---

Pathway

- [Metabolic pathways](#)
- [Oxidative phosphorylation](#)