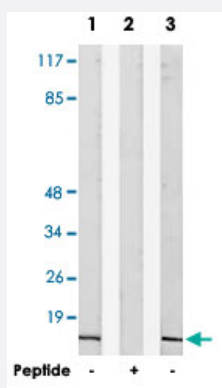


NDUFA4 polyclonal antibody

Catalog # PAB17786 Size 100 ug

Applications



Western Blot (Cell lysate)

Western blot analysis of extracts from HepG2 cells (Lane 1 and lane 2) and RAW 264.7 cells (Lane 3), using NDUFA4 polyclonal antibody (Cat # PAB17786).

Peptide "+" means "with peptide blocking".

Specification

Product Description Rabbit polyclonal antibody raised against synthetic peptide of NDUFA4.

Immunogen A synthetic peptide corresponding to internal of human NDUFA4.

Host Rabbit

Reactivity Human, Mouse, Rat

Specificity This antibody detects endogenous levels of total NDUFA4 protein.

Form Liquid

Recommend Usage Western Blot (1:500-1:1000)
ELISA (1:10000)
The optimal working dilution should be determined by the end user.

Storage Buffer In PBS, pH 7.4 (150mM NaCl, 0.02% sodium azide, 50% glycerol)

Storage Instruction Store at -20°C.
Aliquot to avoid repeated freezing and thawing.

Note

This product contains sodium azide: a POISONOUS AND HAZARDOUS SUBSTANCE which should be handled by trained staff only.

Applications

- Western Blot (Cell lysate)

Western blot analysis of extracts from HepG2 cells (Lane 1 and lane 2) and RAW 264.7 cells (Lane 3), using NDUFA4 polyclonal antibody (Cat # PAB17786).
Peptide "+" means "with peptide blocking".

- Enzyme-linked Immunoabsorbent Assay

Gene Info — NDUFA4

Entrez GeneID	4697
---------------	----------------------

Protein Accession#	O00483
--------------------	------------------------

Gene Name	NDUFA4
-----------	--------

Gene Alias	CI-MLRQ, FLJ27440, MGC104422, MGC126843, MGC126845, MLRQ
------------	--

Gene Description	NADH dehydrogenase (ubiquinone) 1 alpha subcomplex, 4, 9kDa
------------------	---

Omim ID	603833
---------	------------------------

Gene Ontology	Hyperlink
---------------	---------------------------

Gene Summary	The protein encoded by this gene belongs to the complex I 9kDa subunit family. Mammalian complex I of mitochondrial respiratory chain is composed of 45 different subunits. This protein has NADH dehydrogenase activity and oxidoreductase activity. It transfers electrons from NADH to the respiratory chain. The immediate electron acceptor for the enzyme is believed to be ubiquinone. [provided by RefSeq]
--------------	--

Other Designations	NADH dehydrogenase (ubiquinone) 1 alpha subcomplex, 4 (9kD, MLRQ) NADH-ubiquinone oxidoreductase MLRQ subunit
--------------------	---

Pathway

- [Metabolic pathways](#)
- [Oxidative phosphorylation](#)