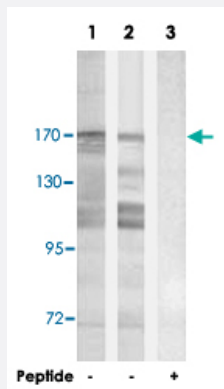


MYOM2 polyclonal antibody

Catalog # PAB17779 Size 100 ug

Applications



Western Blot (Cell lysate)

Western blot analysis of extracts from COS-7 cells (Lane 1 and lane 3) and HT-29 cells (Lane 2), using MYOM2 polyclonal antibody (Cat # PAB17779). Peptide "+" means "with peptide blocking".

Specification

Product Description	Rabbit polyclonal antibody raised against synthetic peptide of MYOM2.
Immunogen	A synthetic peptide corresponding to internal of human MYOM2.
Host	Rabbit
Reactivity	Human, Mouse
Specificity	This antibody detects endogenous levels of total MYOM2 protein.
Form	Liquid
Recommend Usage	Western Blot (1:500-1:1000) ELISA (1:40000) The optimal working dilution should be determined by the end user.
Storage Buffer	In PBS, pH 7.4 (150mM NaCl, 0.02% sodium azide, 50% glycerol)
Storage Instruction	Store at -20°C. Aliquot to avoid repeated freezing and thawing.

Note

This product contains sodium azide: a POISONOUS AND HAZARDOUS SUBSTANCE which should be handled by trained staff only.

Applications

- Western Blot (Cell lysate)

Western blot analysis of extracts from COS-7 cells (Lane 1 and lane 3) and HT-29 cells (Lane 2), using MYOM2 polyclonal antibody (Cat # PAB17779).

Peptide "+" means "with peptide blocking".

- Enzyme-linked Immunoabsorbent Assay

Gene Info — MYOM2

Entrez GeneID	9172
---------------	----------------------

Protein Accession#	P54296
--------------------	------------------------

Gene Name	MYOM2
-----------	-------

Gene Alias	TTNAP
------------	-------

Gene Description	myomesin (M-protein) 2, 165kDa
------------------	--------------------------------

Omim ID	603509
---------	------------------------

Gene Ontology	Hyperlink
---------------	---------------------------

Gene Summary	The giant protein titin, together with its associated proteins, interconnects the major structure of sarcomeres, the M bands and Z discs. The C-terminal end of the titin string extends into the M line, where it binds tightly to M-band constituents of apparent molecular masses of 190 kD and 165 kD . The predicted MYOM2 protein contains 1,465 amino acids. Like MYOM1, MYOM2 has a unique N-terminal domain followed by 12 repeat domains with strong homology to either fibronectin type I or immunoglobulin C2 domains. Protein sequence comparisons suggested that the MYOM2 protein and bovine M protein are identical. [provided by RefSeq]
--------------	---

Other Designations	M-band protein myomesin (M-protein) 2 (165kD) myomesin 2 titin-associated protein, 165 kD
--------------------	---