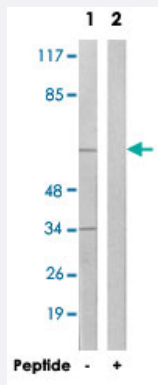


# MEGF9 polyclonal antibody

Catalog # PAB17777

Size 100 ug

## Applications



### Western Blot (Cell lysate)

Western blot analysis of extracts from COLO 205 cells, using MEGF9 polyclonal antibody (Cat # PAB17777).

Peptide "+" means "with peptide blocking".

## Specification

<b>Product Description</b>	Rabbit polyclonal antibody raised against synthetic peptide of MEGF9.
<b>Immunogen</b>	A synthetic peptide corresponding to internal of human MEGF9.
<b>Host</b>	Rabbit
<b>Reactivity</b>	Human, Mouse
<b>Specificity</b>	This antibody detects endogenous levels of total MEGF9 protein.
<b>Form</b>	Liquid
<b>Recommend Usage</b>	Western Blot (1:500-1:1000) ELISA (1:40000) The optimal working dilution should be determined by the end user.
<b>Storage Buffer</b>	In PBS, pH 7.4 (150mM NaCl, 0.02% sodium azide, 50% glycerol)
<b>Storage Instruction</b>	Store at -20°C. Aliquot to avoid repeated freezing and thawing.

**Note**

This product contains sodium azide: a POISONOUS AND HAZARDOUS SUBSTANCE which should be handled by trained staff only.

## Applications

- Western Blot (Cell lysate)

Western blot analysis of extracts from COLO 205 cells, using MEGF9 polyclonal antibody (Cat # PAB17777).  
Peptide "+" means "with peptide blocking".

- Enzyme-linked Immunoabsorbent Assay

## Gene Info — MEGF9

Entrez GeneID	<a href="#">1955</a>
---------------	----------------------

Protein Accession#	<a href="#">Q9H1U4</a>
--------------------	------------------------

Gene Name	MEGF9
-----------	-------

Gene Alias	EGFL5
------------	-------

Gene Description	multiple EGF-like-domains 9
------------------	-----------------------------

Omim ID	<a href="#">604268</a>
---------	------------------------

Gene Ontology	<a href="#">Hyperlink</a>
---------------	---------------------------

Gene Summary	multiple 5
--------------	------------

Other Designations	EGF-like-domain, multiple 5
--------------------	-----------------------------